



THE CIVIL PROTECTION IN PORTUGAL

Américo Mateus
Member of the Board
 Escola Nacional de Bombeiros
 Quinta do Anjinho - Ranholas
 2710-480 Sintra, Portugal
 Tel: +351219239040 Fax: +351219106250
 e-mail: dir.enb@mail.telepac.pt http://www.enb.pt



MAIN TASKS

- ✓ Study of natural and societal risks
- ✓ Vulnerability analysis
- ✓ Public information
- ✓ Civil Protection education
- ✓ Emergency planning
- ✓ Emergency means and resources supply
- ✓ Emergency operations (Response)
- ✓ Safety regulation



Each level has one:

AUTHORITY
SERVICE
EMERGENCY PLAN
OPERATIONS CENTRE



AUTHORITY

- | | |
|-------------------|---|
| ✓ National level | Prime Minister |
| ✓ Regional level | President of the Government
(Azores and Madeira) |
| ✓ District level | Civil Governor (18) |
| ✓ Municipal level | Mayor (308) |



SERVICES

- ✓ National Service for Emergency and Civil Protection (SNBPC)
- ✓ Regional Services for Emergency and Civil Protection (SRPCB Azores and SRPC Madeira)
- ✓ District Centre for Emergency Operations (CDOS/SNBPC)
- ✓ Municipal Services for Civil Protection (SMPC)



EMERGENCY PLANS

- ✓ National Emergency Plan (1)
- ✓ Regional Emergency Plans (2)
- ✓ District Emergency Plans (18)
- ✓ Municipal Emergency Plans (308)





SPECIAL EMERGENCY PLANS

- ✓ Forest fires
- ✓ Floods
- ✓ Droughts
- ✓ Earthquakes
- ✓ Heat waves
- ✓ Cold waves
- ✓ Nuclear accidents
- ✓ Radiological accidents
- ✓ Road transportation of hazardous materials
- ✓ Rail transportation of hazardous materials

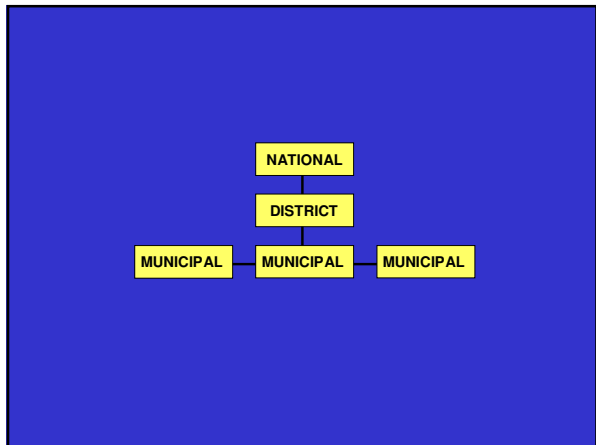


CIVIL PROTECTION OPERATIONS CENTRES

- ✓ Co-ordination of civil protection operations
- ✓ Co-ordination of emergency means and resources allocation
- ✓ Extra - ordinary measures to face disasters

OPERATIONS CENTRES ARE PROGRESSIVELY ACTIVATED

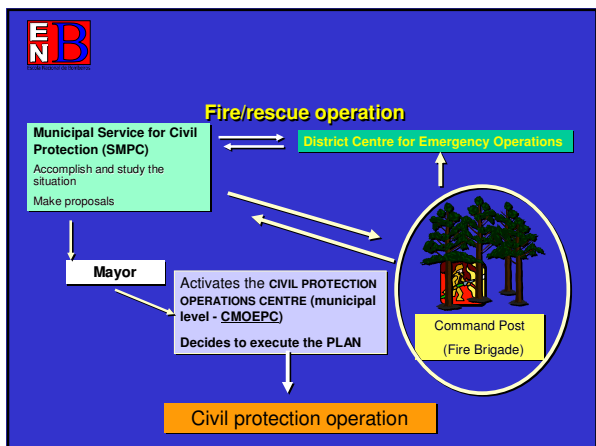
SUBSIDIARITY PRINCIPLE



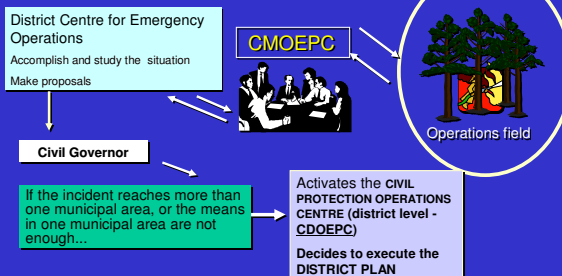
CIVIL PROTECTION OPERATIONS CENTRE (municipal level)

members:

- ✓ Mayor (leader)
- ✓ Delegate of the Fire Brigade
- ✓ National Guard or Police Commander
- ✓ Delegate of Red Cross
- ✓ Health authority
- ✓ Medical authority
- ✓ Delegate of Welfare Department
- ✓ Delegates of Solidarity and Humanitarian Institutions
- ✓ Other institutions



Civil protection operation





-
- CIVIL PROTECTION AGENTS**
- ✓ National Guard (GNR)
 - ✓ National Police (PSP)
 - ✓ Armed Forces (FA)
 - ✓ Civil Aviation Authority (INAC)
 - ✓ Maritime Authority (DGAM)
 - ✓ Medical Emergency Institute (INEM)
 - ✓ Red Cross (CVP)
- PROTEÇÃO CIVIL**
- PREVENIR
 PLANEAR
 SOCORRER
- A PROTEÇÃO CIVIL CORRETO ENEM

-
- SPECIAL OBLIGATION TO CO-OPERATE**
- ✓ Fire Brigades
 - ✓ Health and Medical Services
 - ✓ Welfare and Solidarity Institutions
 - ✓ Departments of:
 - ✓ Forestry
 - ✓ Natural Parks and Reserves
 - ✓ Industry and energy
 - ✓ Transportation and communications
 - ✓ Environmental and Water Resources
 - ✓ Security and Safety Private Companies

-
- PORTUGUESE FIRE BRIGADES**
- ✓ 6 full professional Fire Brigades
 - ✓ 21 partial professional Fire Brigades
 - ✓ 430 voluntary Fire Brigades
 - ✓ 16 industrial Fire Brigades
- Tasks: fire fighting, rescue, emergency medical service and transportation of patients

-
- NATIONAL SERVICE FOR EMERGENCY AND CIVIL PROTECTION**
- ✓ Ministry of Internal Affairs
 - ✓ Operational co-ordination and inspection of fire brigades
 - ✓ and the Portuguese Fire Brigades Confederation (LBP) are partnerships of the National Fire Service School (ENB)



TECHNICAL AND SCIENTIFIC INSTITUTIONS

- ✓ Meteorological Institute (IM)
- ✓ Water Institute (INAG)
- ✓ National Laboratory of Civil Engineering (LNEC)
- ✓ National Institute of Technological & Innovation Engineering (INETI)
- ✓ Directorate-general for Forestry Resources (DGRF)
- ✓ Environment Institute (IA)
- ✓ Technological and Nuclear Institute (ITN)

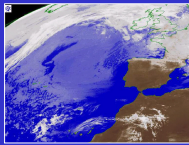
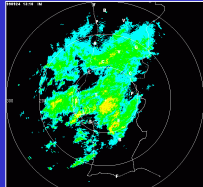


INFORMATION SYSTEMS

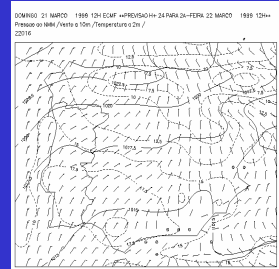
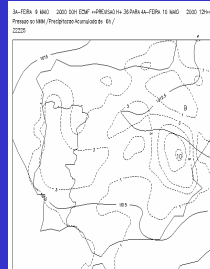


METEOROLOGICAL DATA

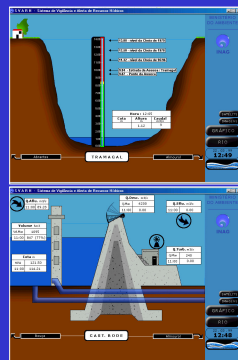
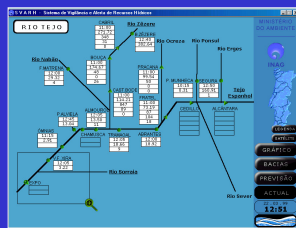
ESTACAO	DATA	PRECIPITACAO (mm)	TEMPERATURA (C)	UMIDIDADE (%)	VELOCIDADE (km/h)	VENTO (km/h)	NEBLINA (h)	NEVE (cm)	NEVADA (cm)
ALGARVE	01/01/2016	0.0	15.0	65.0	10.0	15.0	0.0	0.0	0.0
ALGARVE	02/01/2016	0.0	16.0	68.0	12.0	18.0	0.0	0.0	0.0
ALGARVE	03/01/2016	0.0	17.0	70.0	14.0	20.0	0.0	0.0	0.0
ALGARVE	04/01/2016	0.0	18.0	72.0	16.0	22.0	0.0	0.0	0.0
ALGARVE	05/01/2016	0.0	19.0	75.0	18.0	25.0	0.0	0.0	0.0
ALGARVE	06/01/2016	0.0	20.0	78.0	20.0	28.0	0.0	0.0	0.0
ALGARVE	07/01/2016	0.0	21.0	80.0	22.0	30.0	0.0	0.0	0.0
ALGARVE	08/01/2016	0.0	22.0	82.0	24.0	32.0	0.0	0.0	0.0
ALGARVE	09/01/2016	0.0	23.0	85.0	26.0	35.0	0.0	0.0	0.0
ALGARVE	10/01/2016	0.0	24.0	88.0	28.0	38.0	0.0	0.0	0.0
ALGARVE	11/01/2016	0.0	25.0	90.0	30.0	40.0	0.0	0.0	0.0
ALGARVE	12/01/2016	0.0	26.0	92.0	32.0	42.0	0.0	0.0	0.0
ALGARVE	13/01/2016	0.0	27.0	95.0	34.0	45.0	0.0	0.0	0.0
ALGARVE	14/01/2016	0.0	28.0	98.0	36.0	48.0	0.0	0.0	0.0
ALGARVE	15/01/2016	0.0	29.0	100.0	38.0	50.0	0.0	0.0	0.0
ALGARVE	16/01/2016	0.0	30.0	100.0	40.0	52.0	0.0	0.0	0.0
ALGARVE	17/01/2016	0.0	31.0	100.0	42.0	55.0	0.0	0.0	0.0
ALGARVE	18/01/2016	0.0	32.0	100.0	44.0	58.0	0.0	0.0	0.0
ALGARVE	19/01/2016	0.0	33.0	100.0	46.0	60.0	0.0	0.0	0.0
ALGARVE	20/01/2016	0.0	34.0	100.0	48.0	62.0	0.0	0.0	0.0
ALGARVE	21/01/2016	0.0	35.0	100.0	50.0	65.0	0.0	0.0	0.0
ALGARVE	22/01/2016	0.0	36.0	100.0	52.0	68.0	0.0	0.0	0.0
ALGARVE	23/01/2016	0.0	37.0	100.0	54.0	70.0	0.0	0.0	0.0
ALGARVE	24/01/2016	0.0	38.0	100.0	56.0	72.0	0.0	0.0	0.0
ALGARVE	25/01/2016	0.0	39.0	100.0	58.0	75.0	0.0	0.0	0.0
ALGARVE	26/01/2016	0.0	40.0	100.0	60.0	78.0	0.0	0.0	0.0
ALGARVE	27/01/2016	0.0	41.0	100.0	62.0	80.0	0.0	0.0	0.0
ALGARVE	28/01/2016	0.0	42.0	100.0	64.0	82.0	0.0	0.0	0.0
ALGARVE	29/01/2016	0.0	43.0	100.0	66.0	85.0	0.0	0.0	0.0
ALGARVE	30/01/2016	0.0	44.0	100.0	68.0	88.0	0.0	0.0	0.0
ALGARVE	31/01/2016	0.0	45.0	100.0	70.0	90.0	0.0	0.0	0.0



METEOROLOGY - FORECAST



HYDROLOGICAL DATA



International Operations

- KOSOVO 1999
- TURKEY 1999
- EAST TIMOR 1999
- MOZAMBIQUE 2000
- MOZAMBIQUE 2001
- ALGERIA 2003
- IRAN 2003
- MOROCCO 2004



PROTECÇÃO CIVIL

Uma tarefa de todos para todos