



Assisi, 8 maggio 2012
SPEAKING ABOUT
FIRST AID AND DISABILITY



FIRES IN THE HOSPITAL

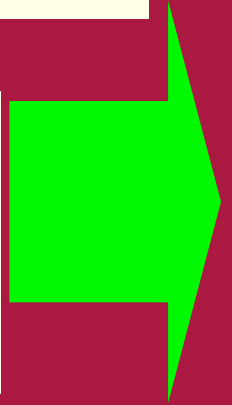
CASE STUDIES

Alberto BOANINI Italian Fire Department
Tuscany Regional Director Staff

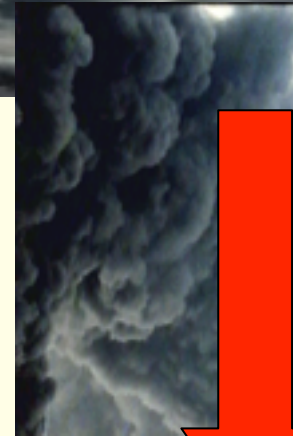
LESSONS LEARNED

- WRITE WHAT YOU ARE GOING TO DO;
- DO WHAT HAVE YOU WRITTEN;
- SPEAK TO THE OTHERS ABOUT WHAT HAVE YOU DONE (DON'T FORGET YOUR MISTAKES EITHER);
- TRY TO DO IT BETTER THE NEXT TIME!

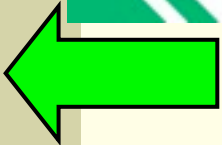
**TWO FIRE EVENTS IN
HOSPITAL BUILDINGS**



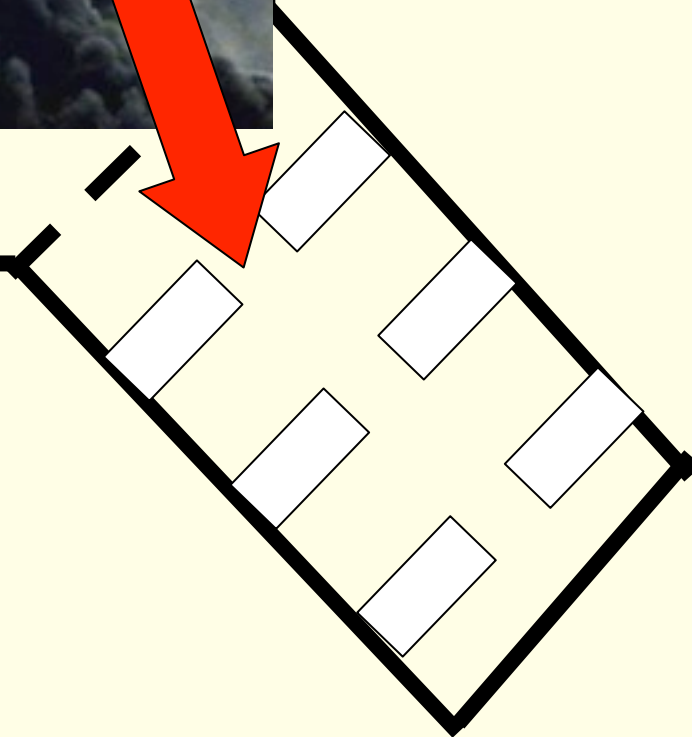
FIRST EVENT 1988



FIRST EVENT 1988



**COME
INSIDE
WITH ME**

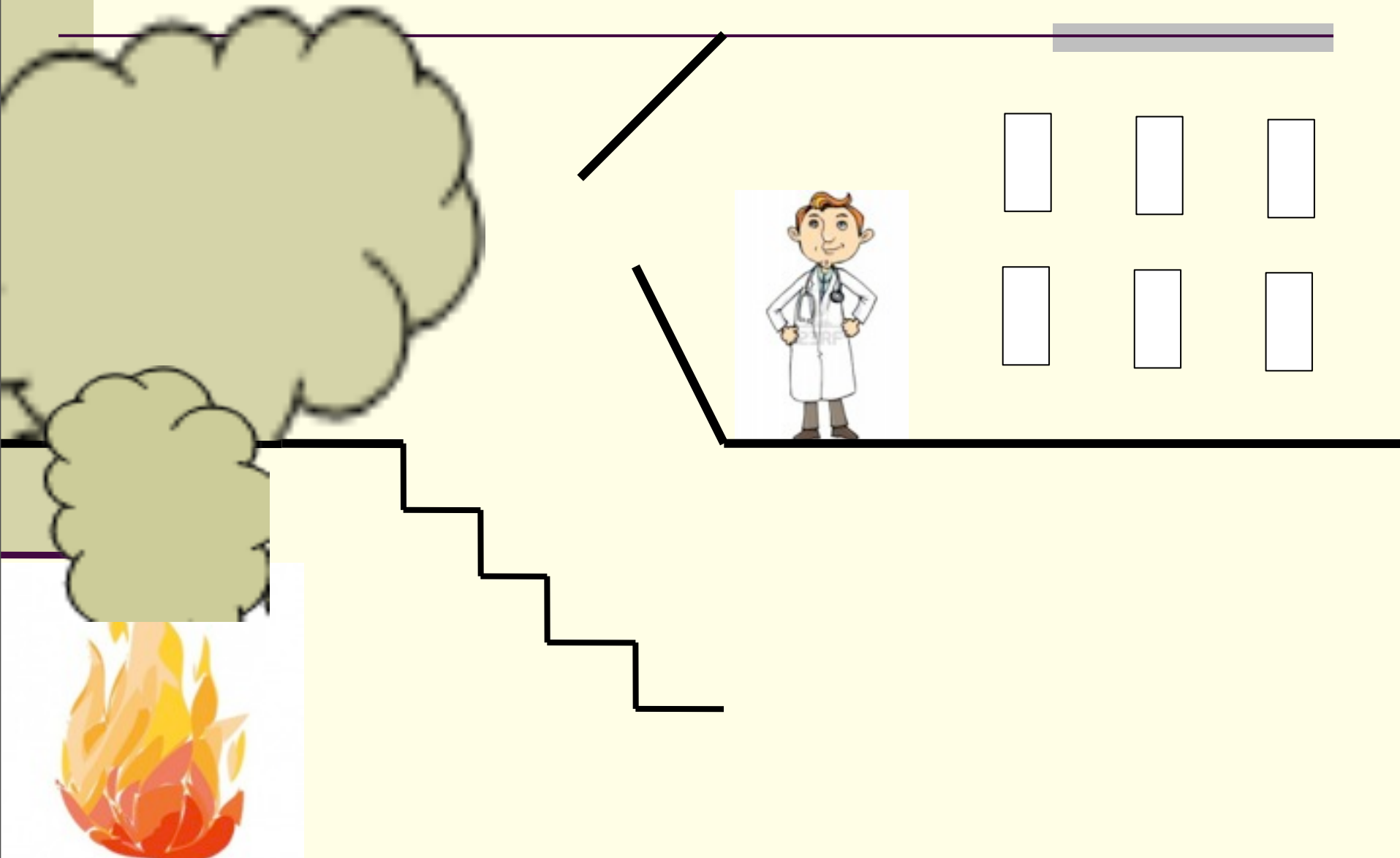


CRITICAL POINTS & DIFFICULTIES

- **TO LOCALIZE THE EVENT INSIDE THE BUILDING;**
- **TO RECOGNISE REAL CRITICAL CASES AND EVACUATION PRIORITIES;**
- **TO MAINTAIN LONGTERM LIFE SUPPORT CARE TO INTENSIVE DEPARTMENT PATIENTS;**
- **TO TASK TWO MISSIONS TO THE SAME TEAM (EVACUATION AND FIRE EXTINCTION);**
- **THE SMOKE & SMOKE MIGRATION TO OTHER DEPARTMENTS THROUGH STANDARD DOORS;**
- **FIRST TEAM RESPONDER ABSENT.**

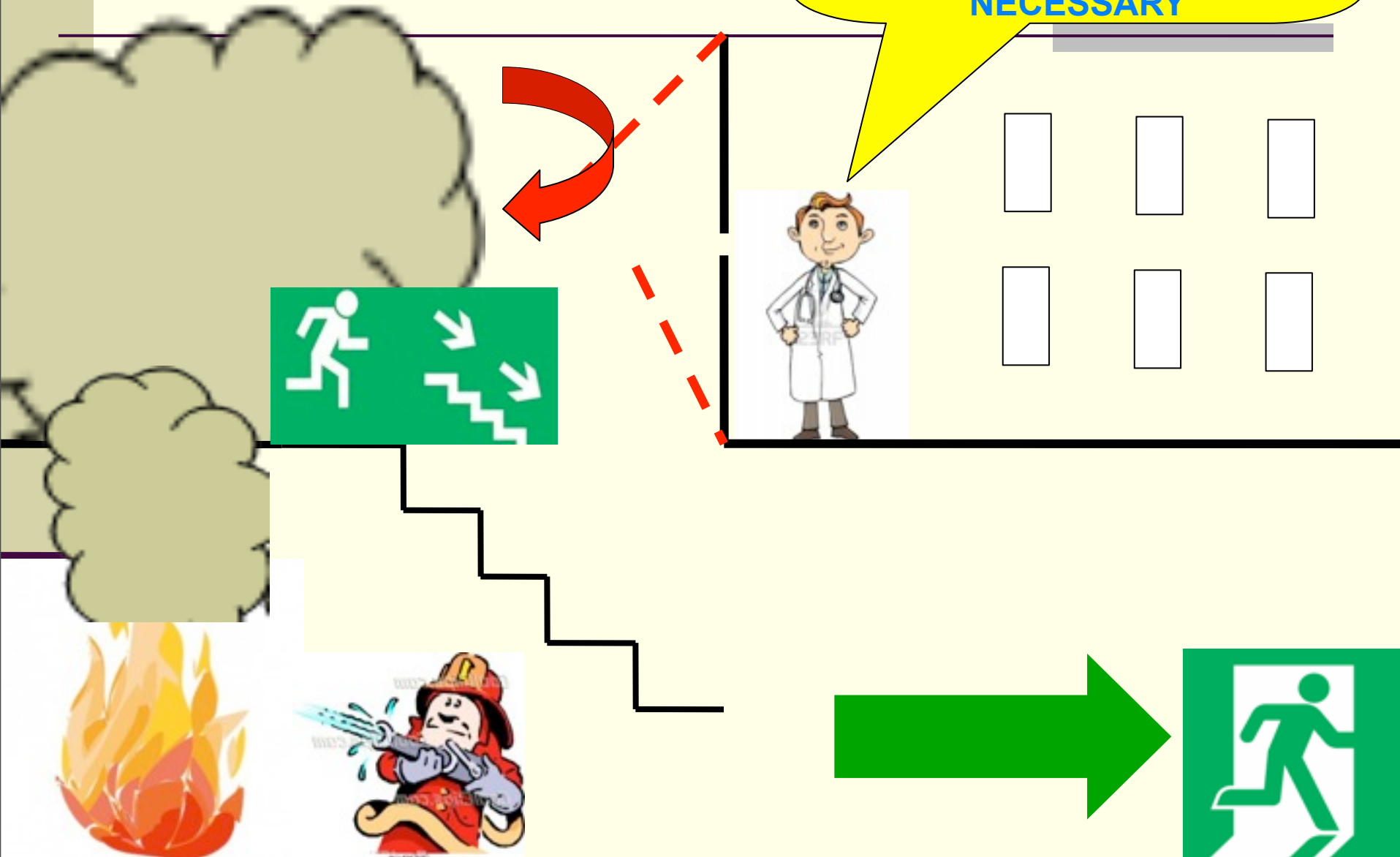
SECOND EVENT

2010



SECOND EVENT 2010

I'M IN SECTION "B" LEVEL 1
6 PATIENTS 2 DOCTORS ALL
OK! IMMEDIATE
EVACUATION IS NOT
NECESSARY



DID WE DO BETTER THAN 22 YEARS

- **LOCALIZED THE EVENT INSIDE THE BUILDING THANKS TO A CORRECT EMERGENCY CALL;**
- **IMMEDIATE NEWS FROM LEVEL ABOVE AND REPORTS ON PATIENTS HEALTH;**
- **MAINTAIN LONGTERM LIFE SUPPORT FOR INTENSIVE CARE DEPARTMENT PATIENTS BECAUSE THE DOCTORS REMAINED INSIDE;**
- **TWO MISSIONS & TWO TEAMS (EVACUATION AND FIRE EXTINCTION);**
- **SMOKE MIGRATION STOPPED BY EMERGENCY DOORS ;**
- **MADE AN ADVANCED "ON SITE" COMMAND POST INSIDE THE HOSPITAL BUILDING.**

FOCAL POINTS & GOOD PROPOSALS



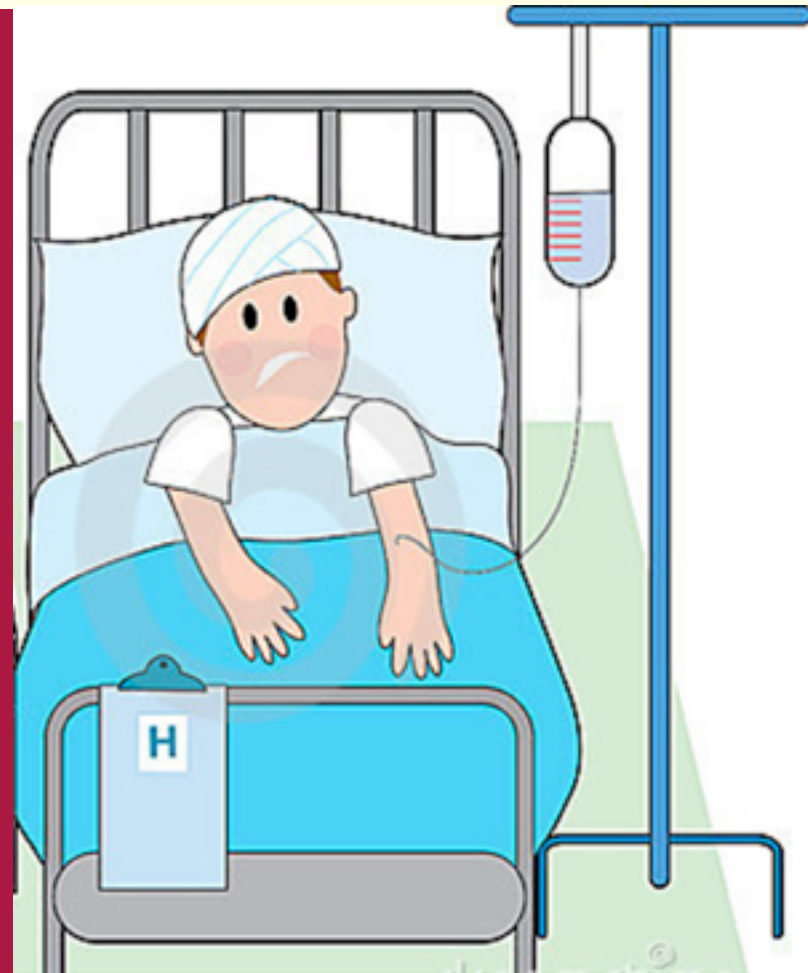
THIS IS THE HOSPITAL SIGN:

**RED CROSS & BED –SOMEBODY NEEDS TO STAY IN
BED AND CANNOT ESCAPE IN CASE OF EMERGENCY**



IN HOSPITAL BUILDINGS WE CAN FIND PEOPLE WITH 4 DIFFERENT SKILLS

PRIORITY: YOU HAVE TO GO AND SAVE PATIENTS FROM THE CRITICAL ROOMS



HERE YOU'LL FIND UNEVACUABLE PATIENTS
PRIORITY: KEEP MEDICAL STAFF IN AND MONITOR
SAFETY UNTIL THE END OF FIRE EVENT



YOU MUST RESTORE STRUCTURAL SAFETY ALONG ESCAPE ROUTES BEFORE MOVING CRITICAL PATIENTS



mercoledì 16 maggio 12

WHEELCHAIR ESCAPES DO NOT ALWAYS HAVE A “HAPPY ENDING”!



WHEN EVACUATION TEAM ARRIVES ON SITE IT CAN FIND “WHEELCHAIR POINT” DESTROYED!



**TO EVACUATE PATIENTS ON TROLLEYS YOU
NEED TO EMPLOY MORE OPERATORS THAN
COULD BE ON SHIFT**

PRIORITY: ESTABLISH EVACUATION PRIORITY and

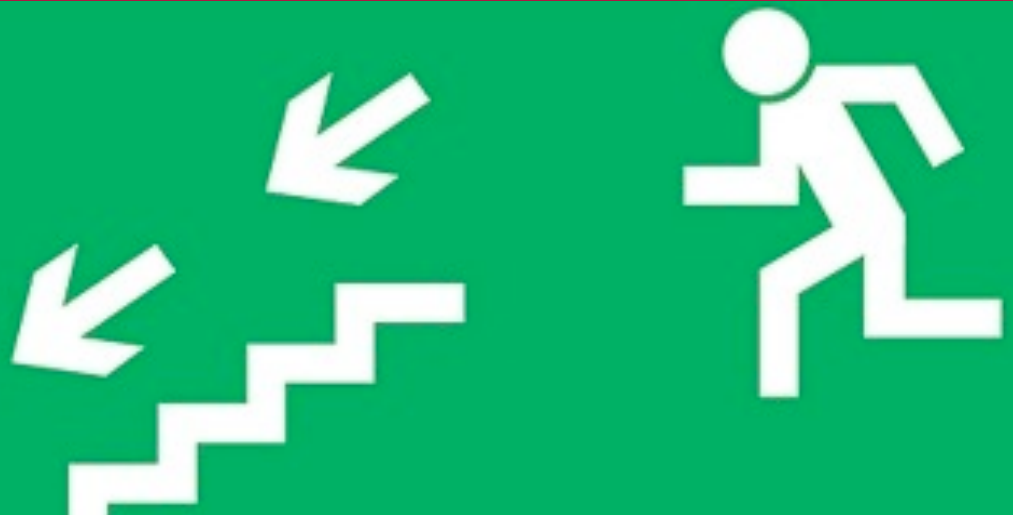


.....THE BEST ROUTE



NO LIFT

NO LADDER



NEWBORN DEPARTMENT

PRIORITY: YOU HAVE TO EVACUATE ALL PATIENTS AT THE SAME TIME



**IN PSYCHIATRIC DEPARTMENT
PATIENTS ARE NOT FREE TO LEAVE
PRIORITY: GO AND OPEN THE DOOR**



Psychiatric patients

PRIORITY: YOU MUST ESTABLISH PHYSICAL CONTACT



THEY'LL TRUST AND FOLLOW YOU !



**BYSTANDERS HAVE
TO CLOSE THE
EMERGENCY
DOORS BEFORE
ESCAPING !**



CHOOSING A WAY TO REACH YOUR TARGET IS NOT SO EASY IN BIG BUILDINGS

PRIORITY: RESCUE TEAM MUST TRAIN ON FIELD EXERCISING WITH THE FIRST RESPONDER TEAMS



SUMMARY

- **EARLY & CORRECT EMERGENCY CALL;**
- **ISOLATION ELEMENTS FOR INSIDE PARTITIONING;**
- **EFFICIENT AND TRAINED EMERGENCY PLANNING;**
- **INTEROPERABILITY BETWEEN EXTERNAL RESCUE TEAMS & FIRST RESPONDER INSIDE TEAM: ONE MISSION TWO ACTIONS (EVACUATION & EXTINGUISH FIRE;**
- **CORRECT BEHAVIOR OF BYSTANDERS;**
- **MAPPING OF CRITICAL TARGETS;**
- **INFORMATION ON BUILDING PLAN.**

STILL A LONG WAY OFF?

EMERGENZA

ORE 8.00-19.00 giorni feriali: 3486521593

ORE 19.00-8.00 giorni feriali: 7034/7033

(da esterno: 0557947034/3)

FESTIVI e PREFESTIVI (nelle 24 ore): 7034/7033

UBICAZIONE DEL CARRELLO DELL'EMERGENZA :
DEGENZA NEUROCHIRURGICA



THANK YOU!

