



INCLUSIVE FIRE SAFETY AND RESCUE: THE ITALIAN EXPERIENCE

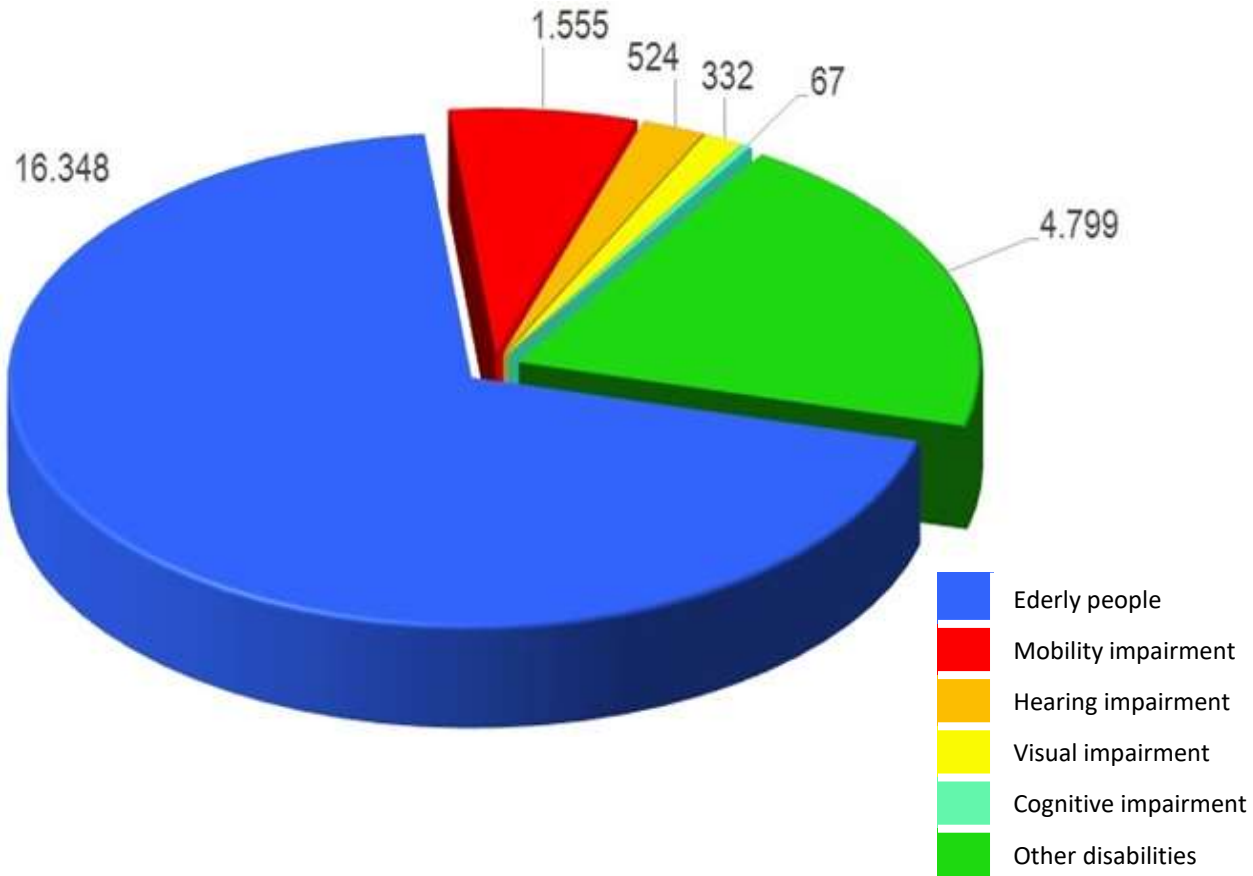
Stefano Zanut

Italian National Fire and Rescue Service (INFRS)

Observatory on safety and rescue of people with special needs

(stefano.zanut@vigilfuoco.it)

WHY TO TALK ABOUT INCLUSIVE RESCUE?



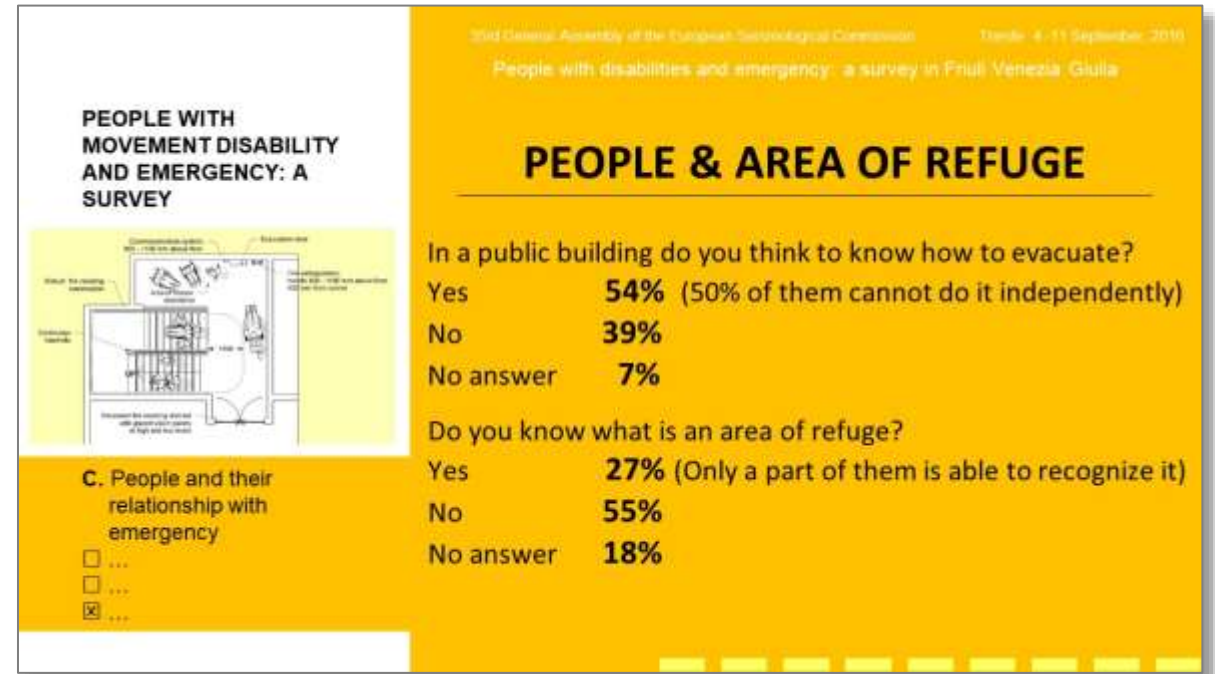
Period: **2016**
N. interventions: **23.625**
Frequency: **65** int./day



Period: **2021, jan-mar**
N. interventions: **15.055**
Frequency: **167** int./day

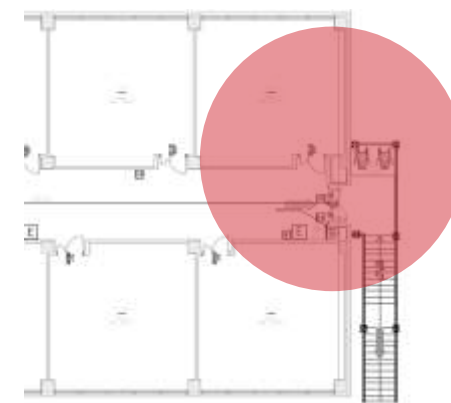
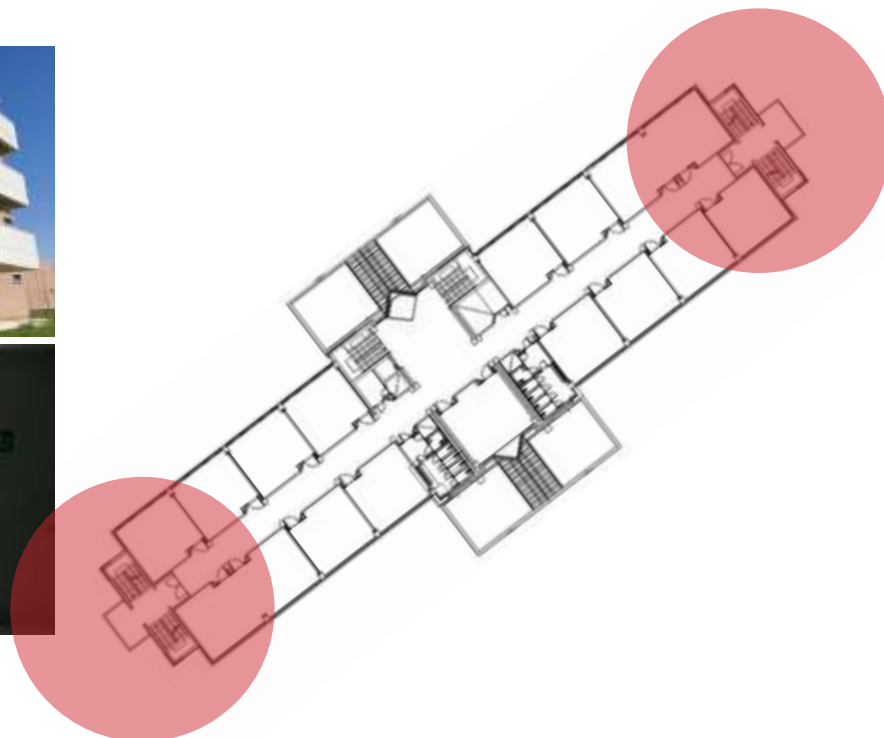


ARE PEOPLE AWARE ... ?



A. Zampa, M. Badanello, C. Conti, M. Franz, I. Garofolo, P. Pascoli Paola e S. Zanut , «People with disabilities and emergency: a survey in Friuli Venezia Giulia», ESC 2016
(<https://meetingorganizer.copernicus.org/ESC2016/ESC2016-244-2.pdf>)

ARE PEOPLE AWARE ... ?



CIRCULAR LETTER n. 4/02 “Guidelines to assess fire safety in workplaces where disabled workers are employed”

[...] These guidelines are based on the following general criteria:

- to provide for the involvement of disabled people in the different planning stages (for example when workers with disabilities are already employed);
- to consider the specific difficulties for people who do not belong to the staff;
- to implement adequate safety standards for all kinds of people, with no discrimination among the workers;
- to plan safety measures for disabled workers to be included in an integrated scheme to increase safety levels for all workers.

N°	DOMANDA	VERIFICA	POSSIBILE SOLUZIONE	SOURCE
A.1	Se la valutazione del rischio ha evidenziato la necessità di installare un sistema di segnalazione suono di allarme, questo è stato attuato?	SI NO SI/NO	Installare un sistema di segnalazione suono di allarme compatibile con il tipo di allarme e di allarmi al suo interno	D.M. 30/09/08 (A.L. 7)
A.2	Il sistema di segnalazione suono di allarme risulta adeguato al tipo di rischio?	SI NO SI/NO	Adattare o sostituire il sistema di allarme che il livello sonoro del segnale sia sufficientemente superiore al livello di fondo	D.M. 30/09/08 (A.L. 7) D.Lgs. 81/08 (A.L. 7)
A.3	Il sistema di segnalazione suono di allarme risulta adeguatamente riconoscibile in caso di emergenza?	SI NO SI/NO	Definire un codice suono riconoscibile in caso di emergenza	D.M. 30/09/08 (A.L. 7) D.Lgs. 81/08 (A.L. 7)
A.4	Negli edifici o strutture in cui il solo allarme sonoro non è sufficiente come un sistema unico di segnalazione ed integrazione del segnale sonoro?	SI NO SI/NO	Installare un sistema di segnalazione suono di pericolo ed integrazione di quello sonoro	D.M. 30/09/08 (A.L. 7) D.Lgs. 81/08 (A.L. 7)
A.5	Qualora siano presenti lavoratori con limitazioni delle capacità uditive o visive, considerare anche a carico dell'uso di mezzi di protezione individuale, sono previsti adeguati mezzi in grado di compensare tale situazione?	SI NO SI/NO	Dotare la postazione di lavoro di sistemi di segnalazione (visuale o uditiva) e di dispositivi di protezione (visuale o uditiva) e di mezzi di protezione individuale (visuale o uditiva)	D.M. 30/09/08 (A.L. 7) D.Lgs. 81/08 (A.L. 7)
A.6	Sono previste condizioni in grado di compensare le eventuali carenze ricorrenti, in attesa di una loro risoluzione?	SI NO SI/NO	Definire le misure straordinarie, anche di tipo gestionale, per compensare le eventuali carenze ricorrenti, in attesa di una loro risoluzione	D.Lgs. 81/08 (A.L. 7)

- Alarm perception
- Wayfinding during emergency evacuation
- Mobility in inner spaces
- Mobility in outer spaces



Workplaces
Technical code

1998

Working
group

2001

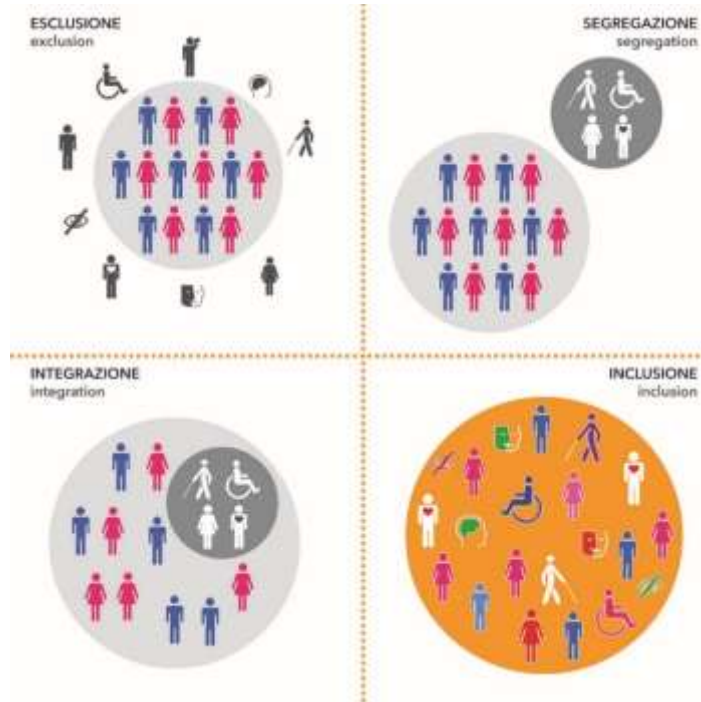
Observatory on safety
and rescue ...

Italian Fire
Prevention Code

2015



Today

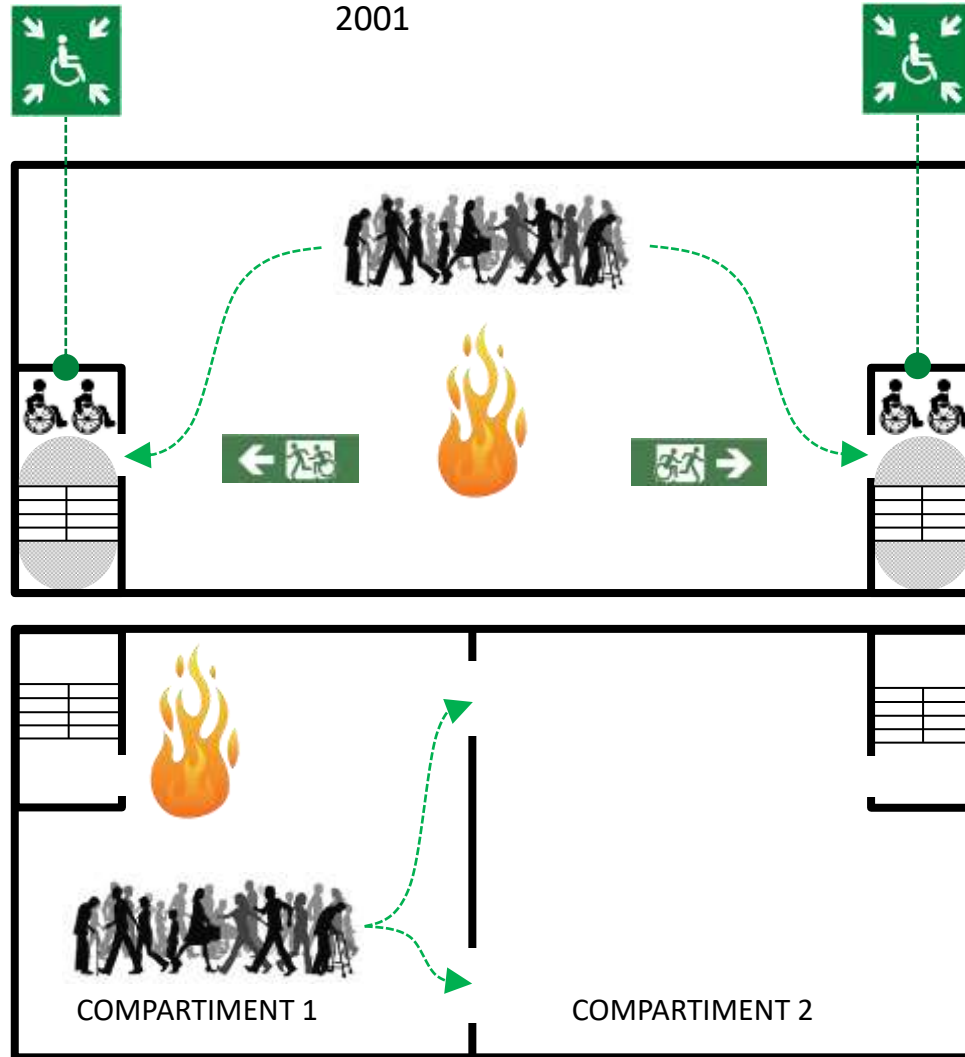


Inclusion: various disabilities (e.g. motor, sensory, cognitive, etc.), temporary or permanent, of the persons who frequent the activities (occupants) shall be considered an integral part of the fire safety design;



Occupant: a person present for any reason within the activity, also considered in light of their interaction with the environment in the event of physical, mental or sensory disabilities.

(https://www.vigilfuoco.it/allegati/PI/Technical_Fire_Prevention_Standards.pdf)



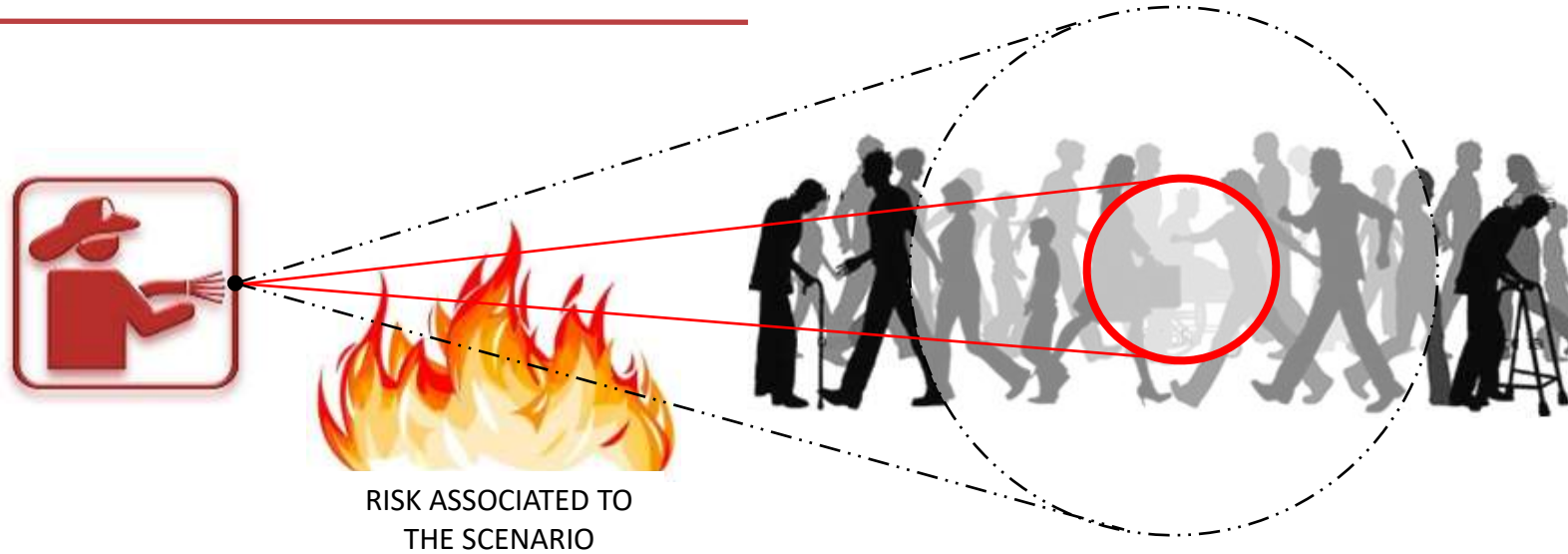
REFUGE AREA

Temporary safe area where occupants may wait for assistance to complete their evacuation to a safe area.

PROGRESSIVE HORIZONTAL EVACUATION

An evacuation procedure that provides for the movement of the occupants from the compartment of initial ignition to an adjacent compartment capable of containing and protecting them until the fire has been extinguished or until a subsequent evacuation to a *safe area* has been completed.

INCLUSIVE RESCUE AND OPERATIVE SCENARIOS



HOW TO RECOGNIZE PEOPLE'S SPECIAL NEEDS AND THE WAYS TO MEET THEM DURING AN EMERGENCY

HOW TO RELATE TO THE PERSON TO BE HELPED ALSO THROUGH CLOSER PEOPLE LIKE CAREGIVERS OR OTHERS

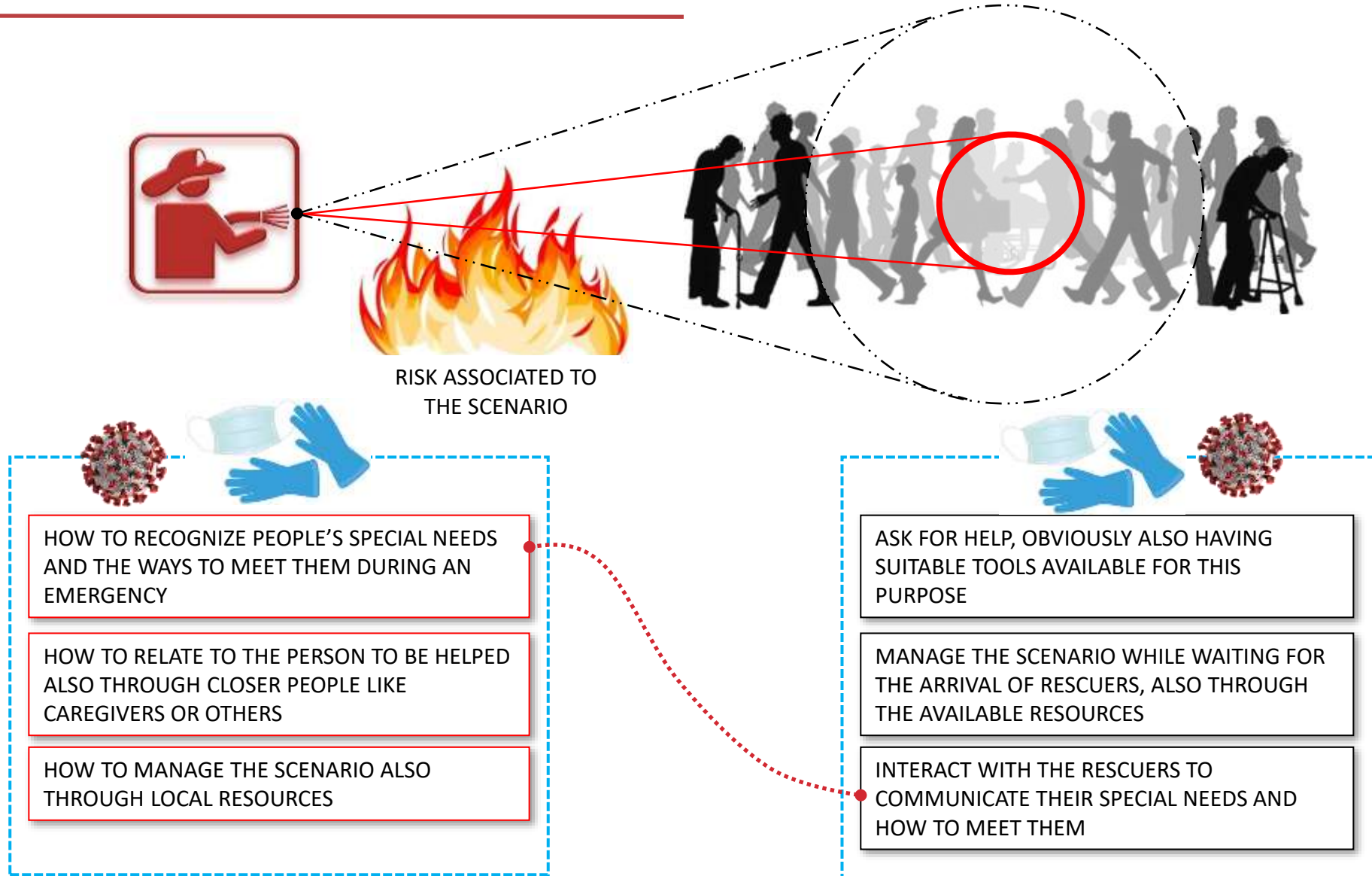
HOW TO MANAGE THE SCENARIO ALSO THROUGH LOCAL RESOURCES

ASK FOR HELP, OBVIOUSLY ALSO HAVING SUITABLE TOOLS AVAILABLE FOR THIS PURPOSE

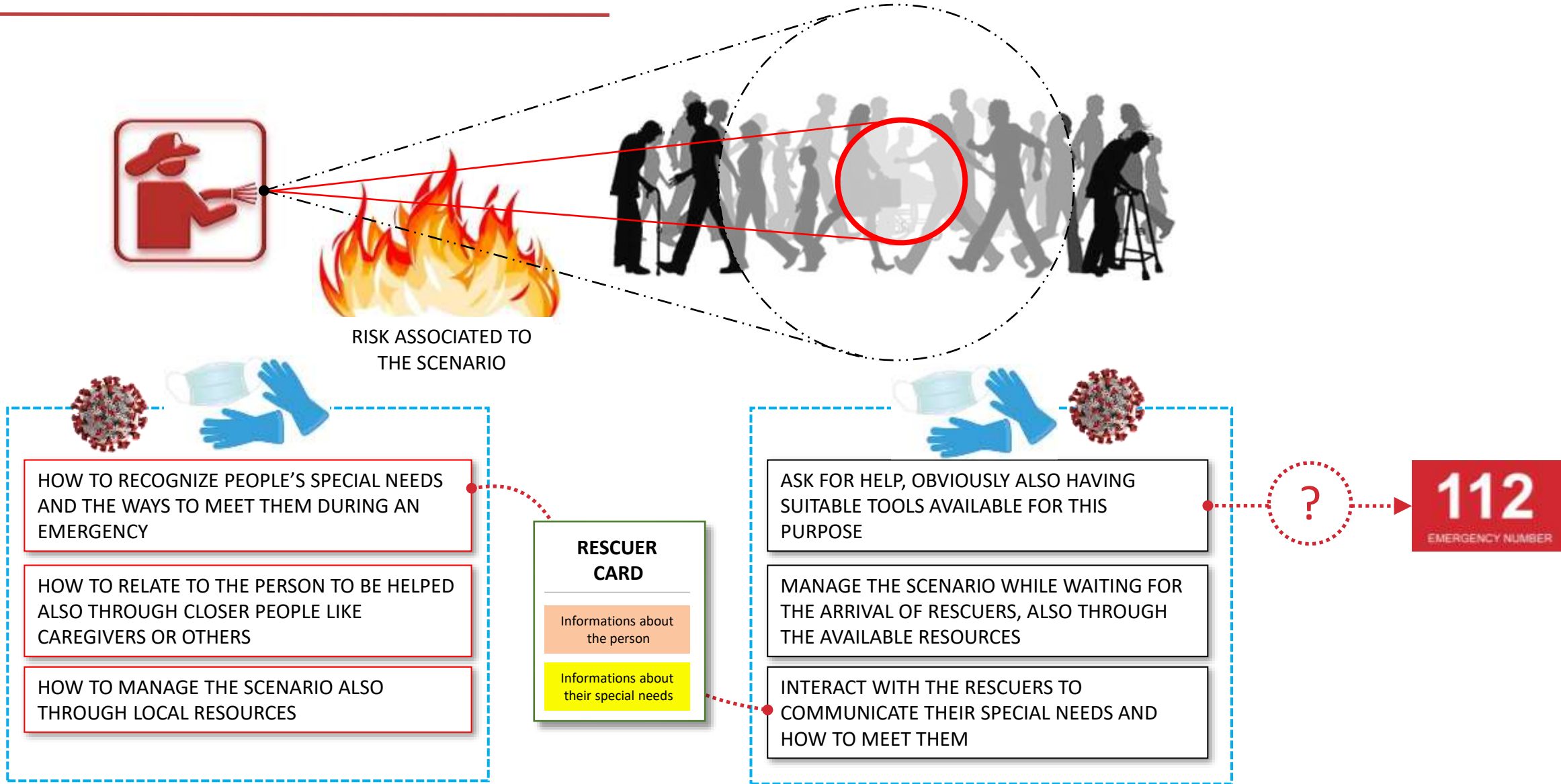
MANAGE THE SCENARIO WHILE WAITING FOR THE ARRIVAL OF RESCUERS, ALSO THROUGH THE AVAILABLE RESOURCES

INTERACT WITH THE RESCUERS TO COMMUNICATE THEIR SPECIAL NEEDS AND HOW TO MEET THEM

INCLUSIVE RESCUE AND OPERATIVE SCENARIOS



INCLUSIVE RESCUE AND OPERATIVE SCENARIOS



Experience 1: "I HELP YOU TO RESCUE ME"



- Persons with autism
- Who are they?
- How can I recognize them?



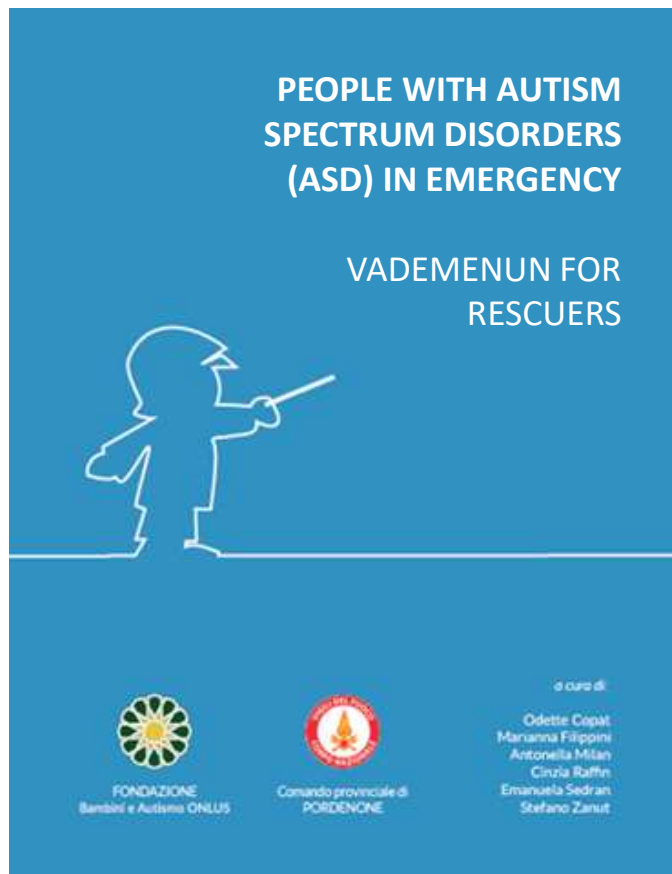
Can someone help us to better understand these aspects and how to rescue these people?



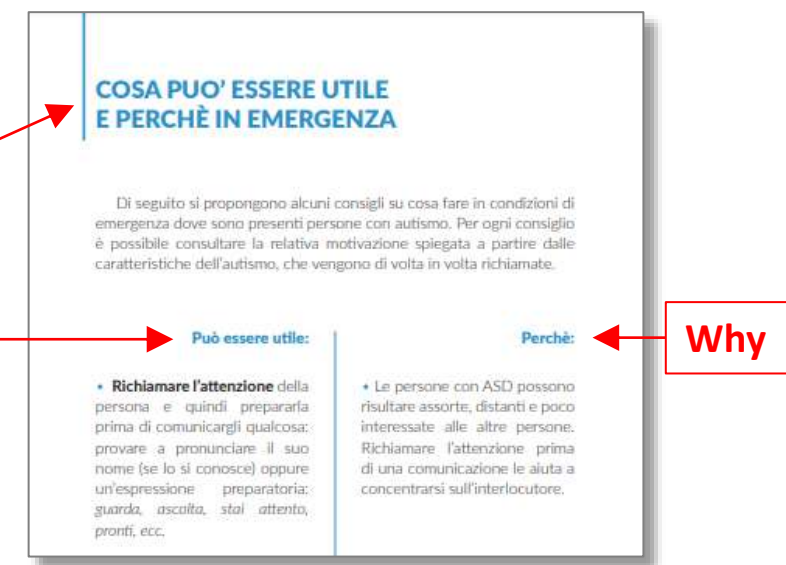
1% of the population suffers from autism spectrum disorder which affects males more than females, with a 4:1 ratio (DSM V - Diagnostic and Statistical Manual of Mental Disorders).



Experience 1: "I HELP YOU TO RESCUE ME"



- What is autism?
- People with autism in emergency
- Can I recognize a person with autism by looking at him/her?
- Can I recognize a person with autism by the way he/she interacts with me?
- During an emergency situation, people with autism may react in an unusual or bizarre way, for example: ...
- What should I do if the person starts screaming to runaway from a place or a situation?
- What can be useful in an emergency and why
- Communicating with images



(<http://www.vigilfuoco.it/asp/notizia.aspx?codnews=45133&grande=si>)

Experience 1: "I HELP YOU TO RESCUE ME"



Experience 2: RESCUE PEOPLE WITH MULTIPLE SCLEROSIS IN THE DOMESTIC ENVIRONMENT



1

2

3

Experience 2: RESCUE PEOPLE WITH MULTIPLE SCLEROSIS IN THE DOMESTIC ENVIRONMENT



(<https://www.vigilfuoco.tv/eventi/tecniche-e-manovre-intervento-ambiente-domestico>)

Experience 3: AN INCLUSIVE APPROACH TO A SISMIC EXERCITATION



(<https://www.vigilfuoco.tv/eventi/venzone-ud-la-disabilita-negli-scenari-di-emergenza>)

GUIDELINE FOR INCLUSIVE RESCUE

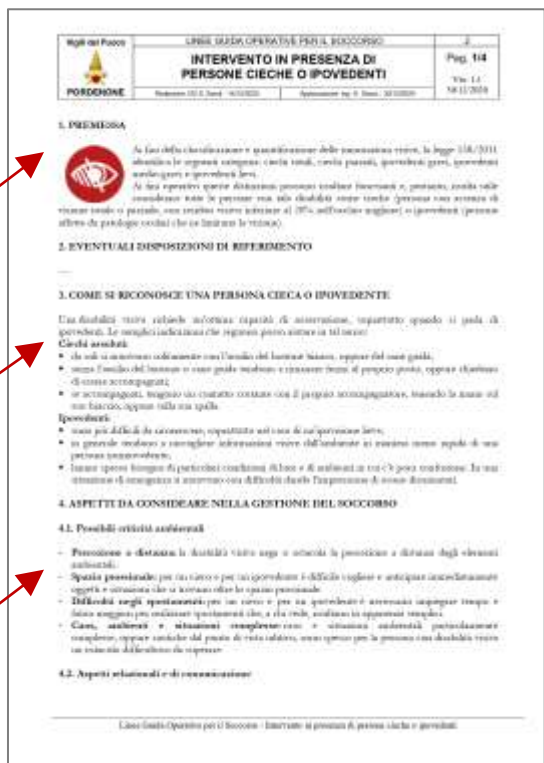
1. General aspects with some data

3. How to recognize this disability

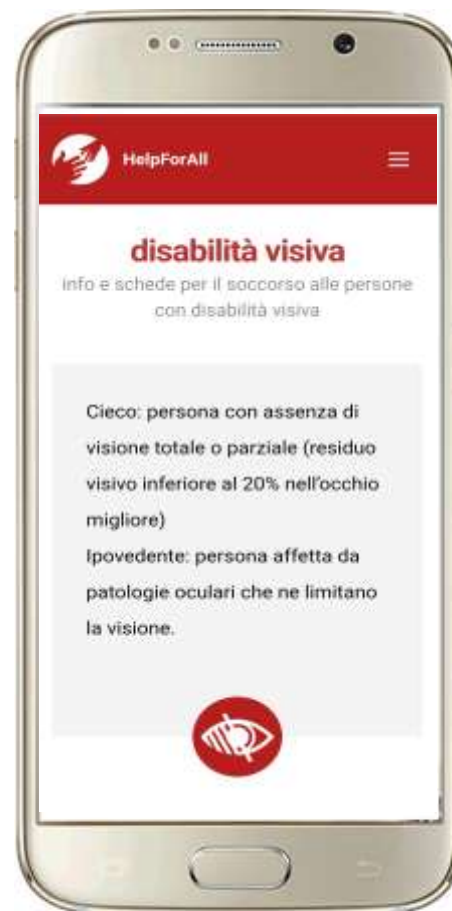
4. Criticalities connected with the scenario

5. Operative modes

6. Operation center



APP "APP HELP FOR ALL "



Information and operating procedures about:

- mobility impairment
- hearing impairment
- visual impairment
- autism
- down syndrome

Video with dialogues transcription for deaf people



(https://play.google.com/store/apps/details?id=com.helpforall.grvvf&hl=en_US)



**THANK YOU FOR
YOUR ATTENTION!**



Stefano Zanut

stefano.zanut@vigilfuoco.it