

ESS

Emergency Support System

2nd international conference on interoperability

Venice, Italy
May-19, 2011

Gideon Hazzani- ESS Coordinator



Agenda

- ▶ ESS project information
- ▶ ESS short overview
- ▶ ESS movie (3 min long)



ESS project

- ▶ An FP7 project
- ▶ Period: 2009–2013
- ▶ 20 partners
- ▶ Grant by EU: 9.1 Million Euros



Who are ESS Consortium Partners ?

The coordinator: **VERINT**

3 end users:



3 research institutes:



Gesellschaft



12 industrial organizations:



ESS countries



Catastrophic Events



The Characteristics of Catastrophic Event



What is the Emergency Support System (ESS)?

- ▶ A portable, quickly deployable, independent, scalable, ad-hoc, theater-intelligence system for abnormal and catastrophic events
- ▶ Enables improved management, decision support and command and control of most crisis events
- ▶ Significant Enhancement for legacy C4I systems



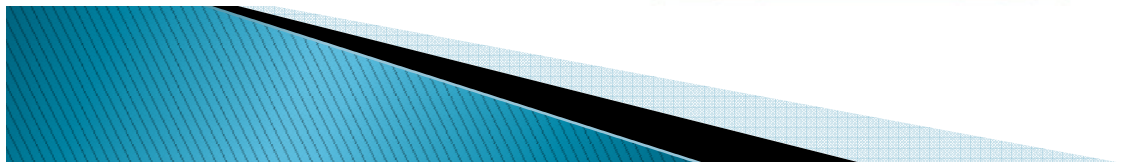
End Users

- Law enforcement (Police)
- Rescue forces (Red Cross, Fire Department)
- Home land security authorities
- Municipal/regional authorities
- Crisis management organizations
- Environmental care authorities

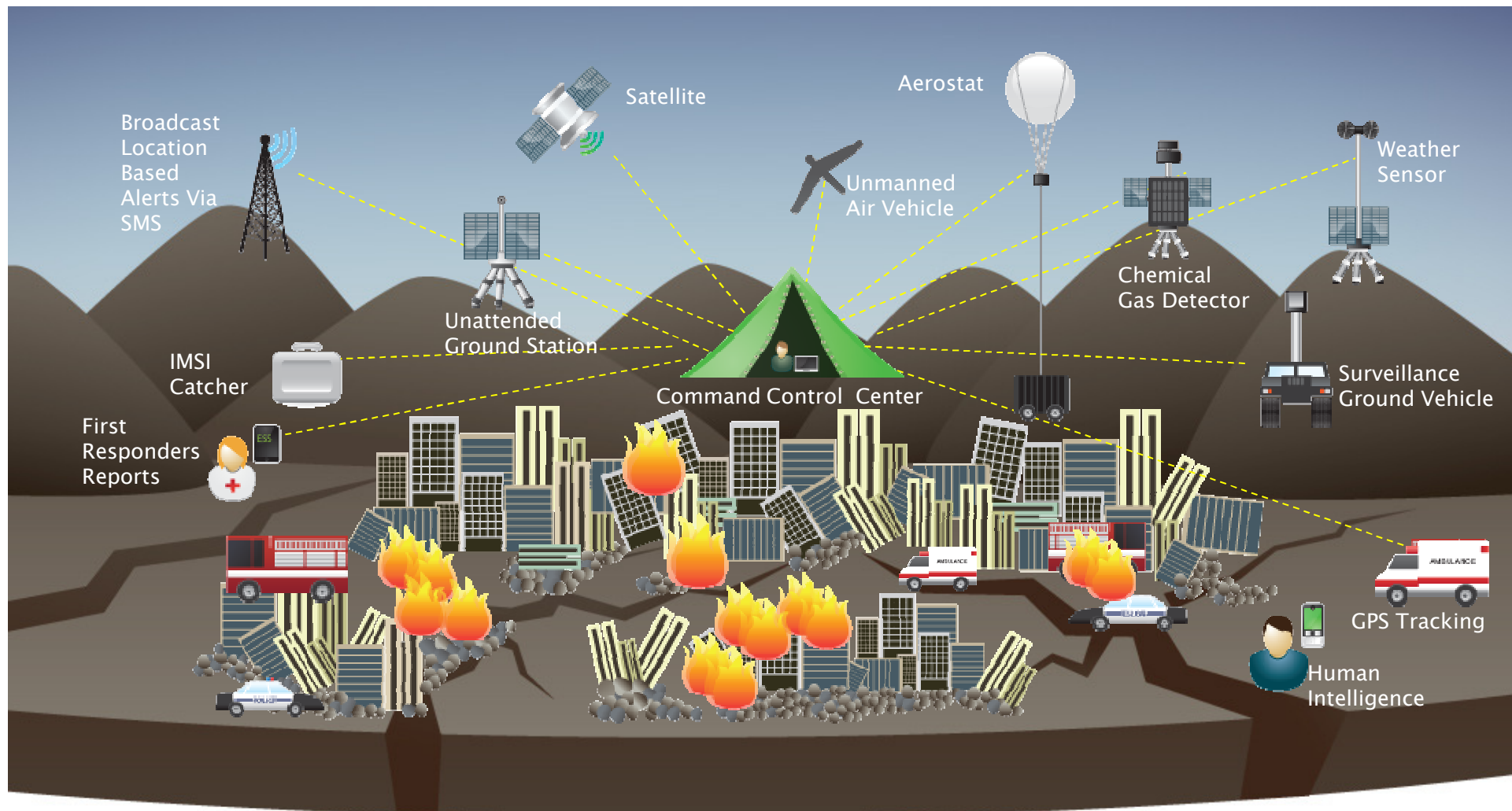


Disaster strikes

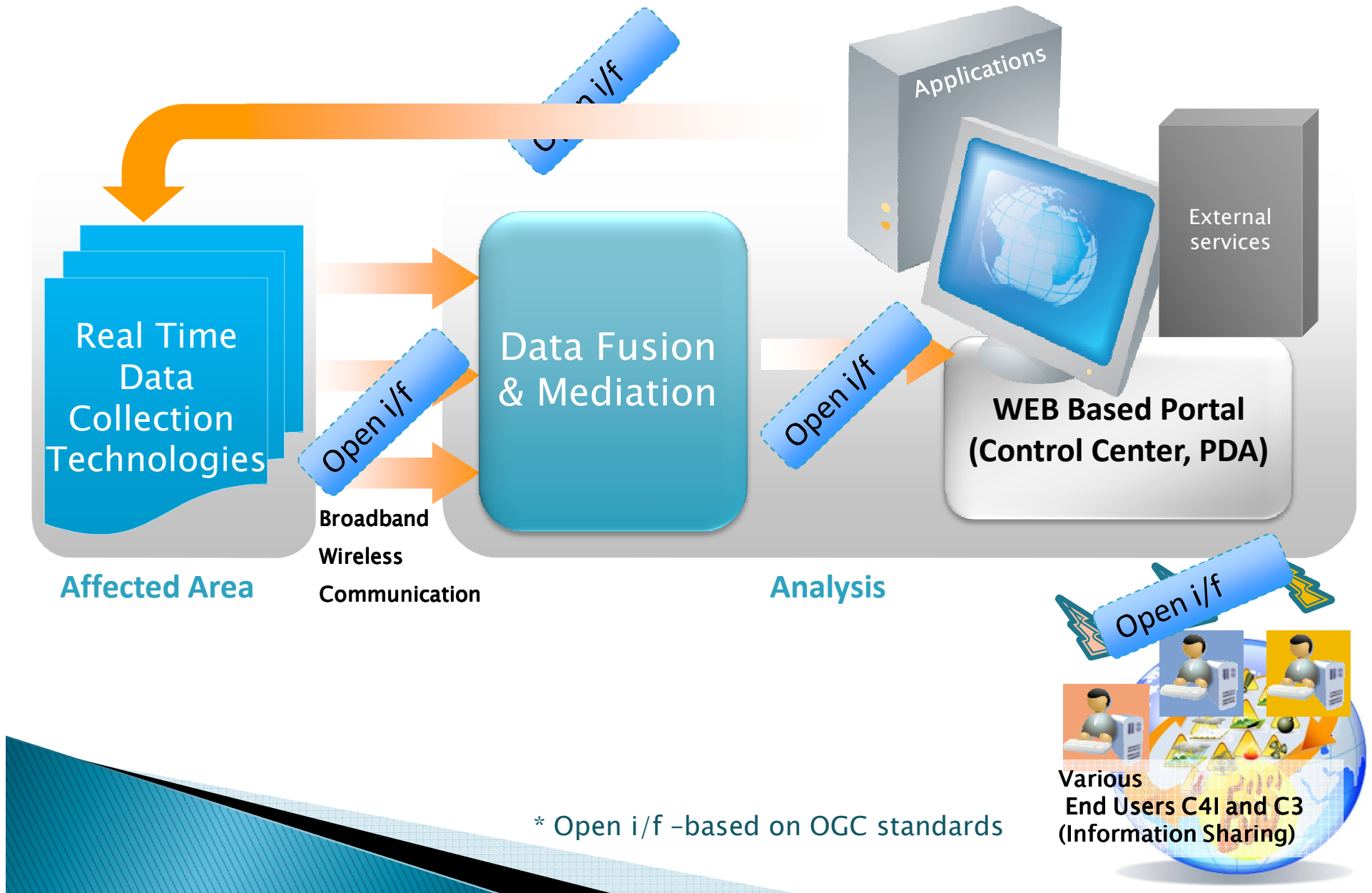
Operational ESS



Operational ESS



System Elements

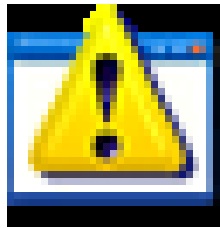


Open and standardized Interfaces

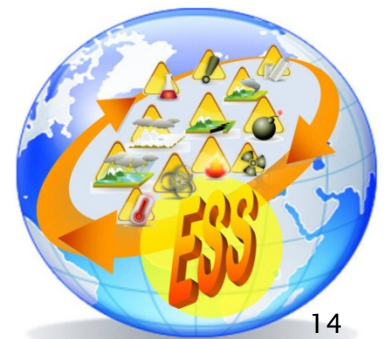
- ▶ Full interoperability between the system elements
- ▶ Multiple vendors
- ▶ Modularity and Flexibility
 - Add new sensors
 - Add new applications
- ▶ Plug and play
 - Flexibility to add new applications at the ESS portal (e.g. earthquake damage map)
 - Flexibility to add new sensors (e.g. RF-ID bracelets for casualties)
 - Flexibility to interface to different and many C3s



ESS movie



ESS_Animation.wmv - Shortcut.Ink



Thank you !

gideon.hazzani@verint.com

