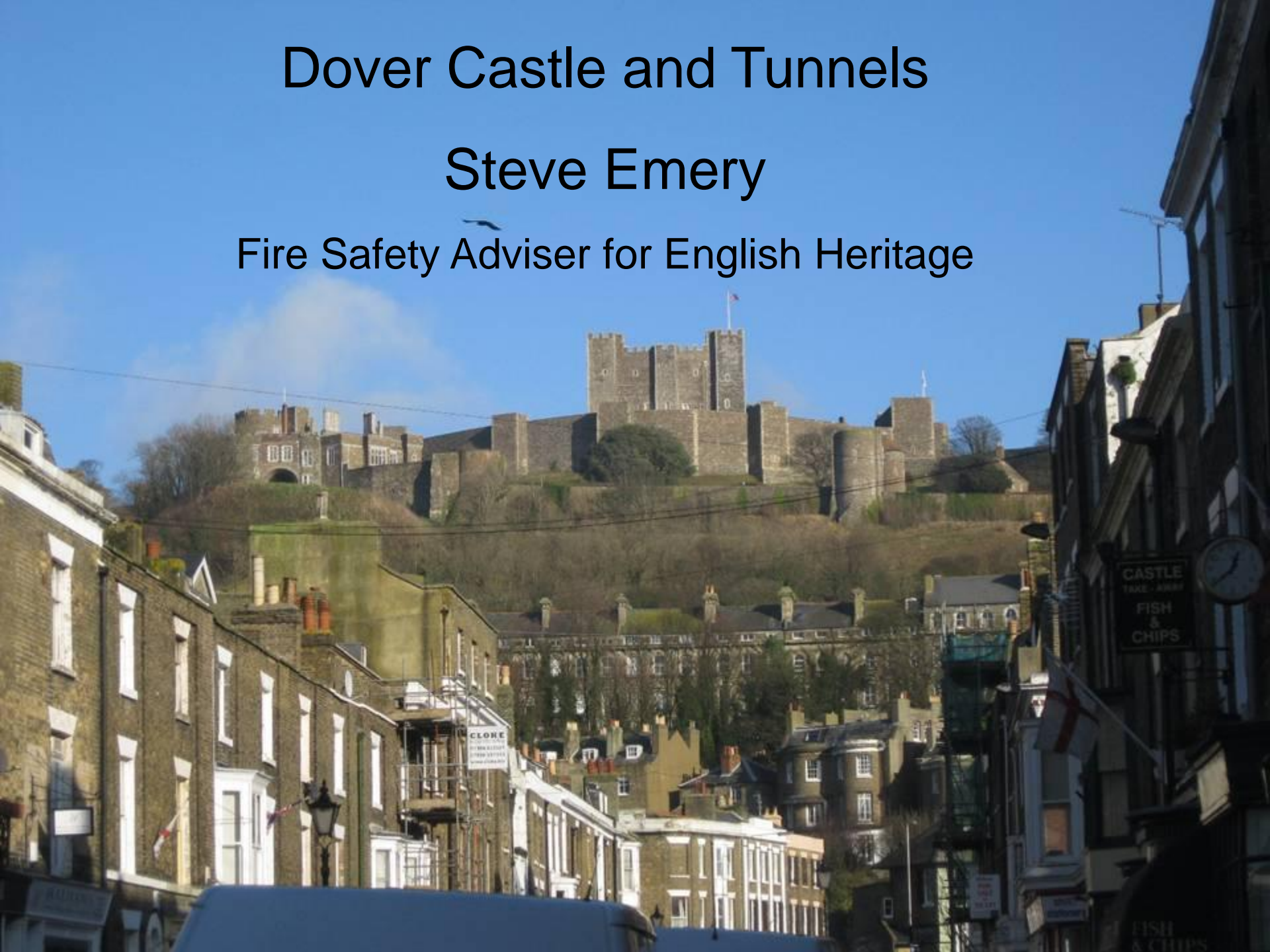
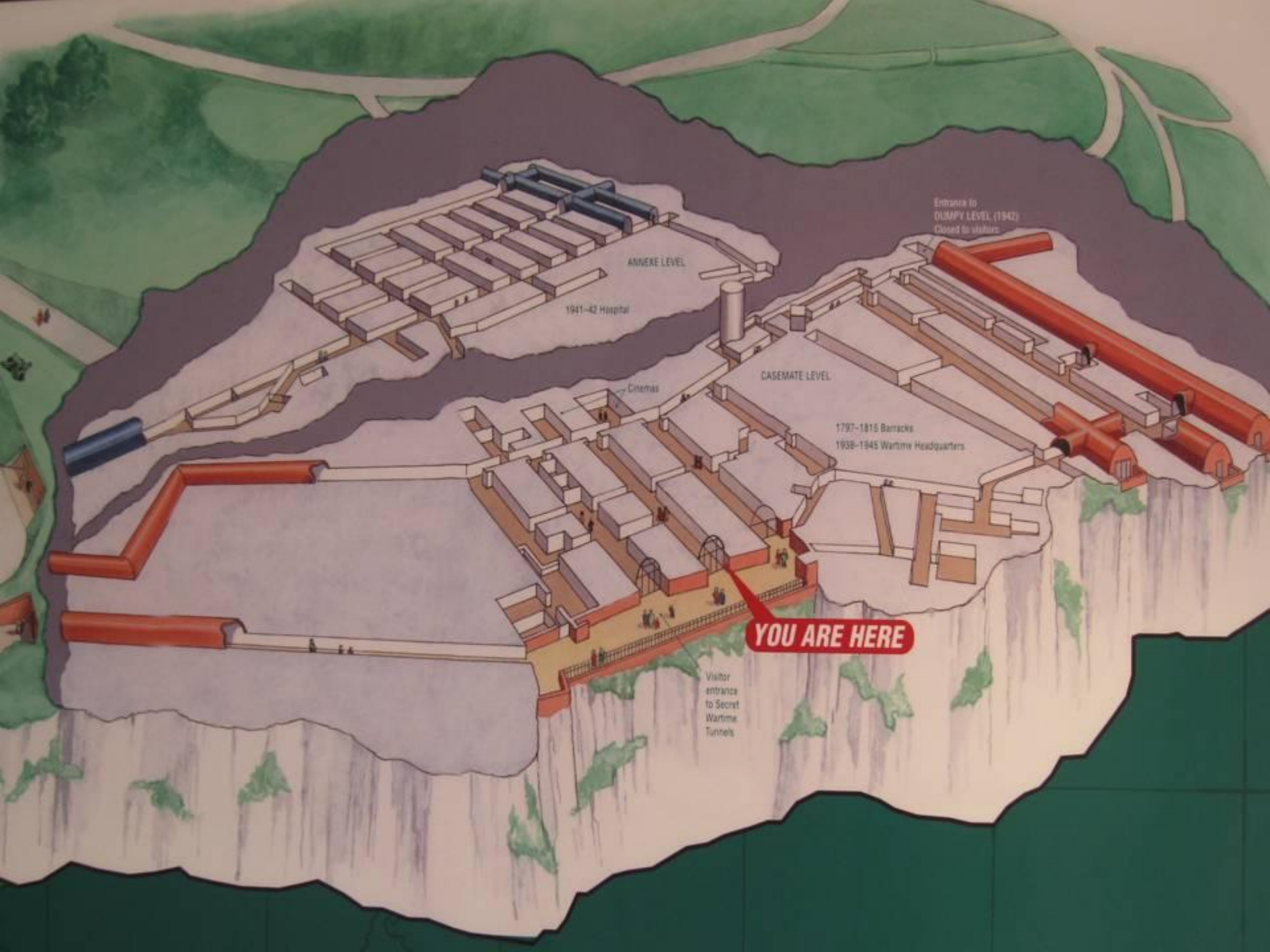


Dover Castle and Tunnels

Steve Emery

Fire Safety Adviser for English Heritage





ANNEXE LEVEL

1941-42 Hospital

Cinemas

CASEMATE LEVEL

1797-1815 Barracks

1938-1945 Wartime Headquarters

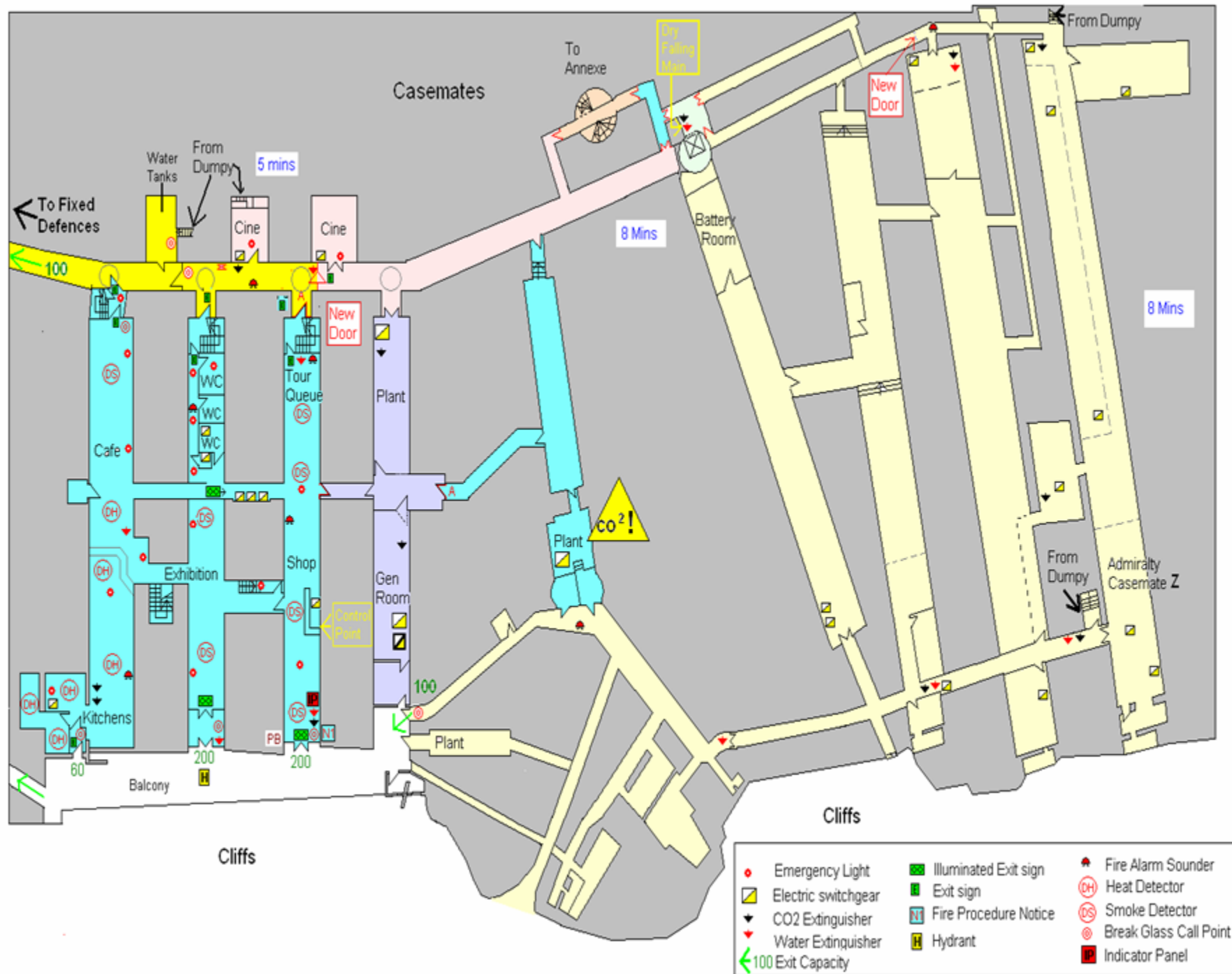
Entrance to
DUMPY LEVEL (1942)
Closed to visitors

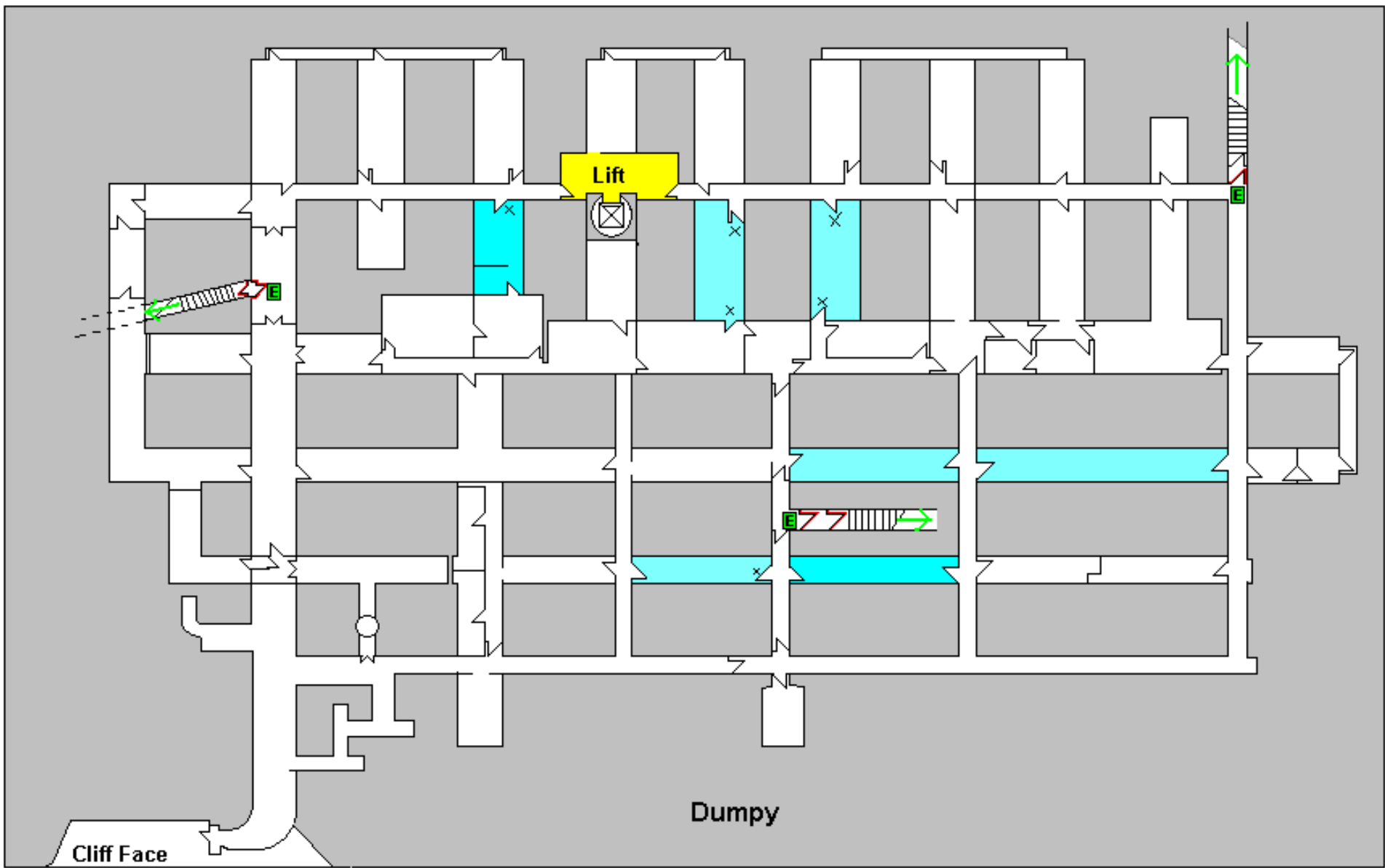
YOU ARE HERE

Visitor
entrance to Secret
Wartime
Tunnels











DRESSING
STATION



VICE ADMIRAL
DOVER

VIRRED DEFENCES
DOVER

Secret Wartime Tunnels
←

Entrance to
**Secret Wartime
Tunnels**

World War II Underground Hospital
and Operations Headquarters

Tunnel to
Civil Command
10



















Dover Castle

Secret Wartime Tunnels Revitalization

English Heritage is working on an exciting project which will combine the special character of the Secret Wartime Tunnels with new presentation, offering a compelling visitor experience which brings alive the events, people and atmosphere leading up to, during and after Operation Dynamo, the evacuation from Dunkirk in May and June 1940.

The tunnels at Dover are an exceptional feature, without parallel at any other English medieval castle. Conceived, built and extended at periods of national emergency, they were used as barracks, military hospital, and both army and navy command centres but their most distinguished role was in the summer of 1940, when they became the naval headquarters for Operation Dynamo.

The story of this pivotal event in the history of World War II will unfold as visitors walk through historic spaces with dynamic displays where original film footage combines with newly created film and soundscapes.

As part of this project, we are undertaking conservation work on some areas within the tunnels and improving the environment to ensure the tunnels and their story can continue to be enjoyed and understood by future generations.

Operation Dynamo: Rescue from Dunkirk opens to visitors on June 5th 2011.

This project is the second phase in a series of planned investments designed to improve the visitor experience at Dover Castle. English Heritage are spending over £2.7m on the Secret Wartime Tunnels, match funding for the CABE Sea Change investment in the Great Tower and visitor admissions building projects which opened in summer 2009. The Sea Change programme aims to drive cultural and creative regeneration and economic growth in seaside towns by funding inspiring, creative and innovative projects, bringing a sense of pride, enjoyment and celebration. Funding Partners in the Sea Change programme for Dover are: Dover District Council, Kent County Council, English Heritage, SEEDA and Dover Harbour Board. The projects are all supported by Dover Pride as part of the wider regeneration plans going forward.



Permission by The Imperial War Museum

It is thanks to our members, paying visitors and supporters that English Heritage is able to fund such vital projects. To become a member of English Heritage or make a donation towards our work call 0870 333 1182 or visit www.english-heritage.org.uk/membership



ENGLISH HERITAGE

Days out worth talking about.



Dover Castle Inductions

- **All operatives must be inducted.**
- **Inductions 8.00am every day**
No induction, No work!
- **Alcohol & Drugs**
- **No Tag, No access, No work!**









Yellow card

No.	Date
This is a first warning and a subsequent repeat issue will result in you being asked to leave site.	
Issued by (Kier supervisor)	
To	
CSCS no.	
Company	
Location	
Unsafe act/condition (immediate action is required to rectify this situation)	
Signed as received	Distribution: top copy - individual; 2nd copy - individual's employer; 3rd copy - retain in book
Confirmation that action has been taken	
Signed by Kier supervisor	Signed by individual's site supervisor
Date	



Red card

No.	Date
Issued by (Kier supervisor)	
To	
CSCS no.	
Company	
Location	
Unsafe act/condition	
Repeat issue (yellow card previously issued) Take appropriate	Single act
Signed as received	Distribution: top copy - individual; 2nd copy - individual's employer; 3rd copy - retain in book
Confirmation that individual has left site	
Signed by individual's site supervisor	Signed by Kier supervisor
Date	

We want all Kier sites to be safe places of work. Any one working in an unsafe manner will at the discretion of Site Management be issued with a Yellow or Red Card. Any person receiving a Red Card will be asked to leave.

Main Entrance

Dover Tunnels Annex

Stairs to Surface

Exit

No 3 Ward Passage

Ward 2

Sluice

Ward 1

Operating Theatre

Curatorial Store

100

Exit Tunnel

Central Gallery

Reception

Dorm

Mess

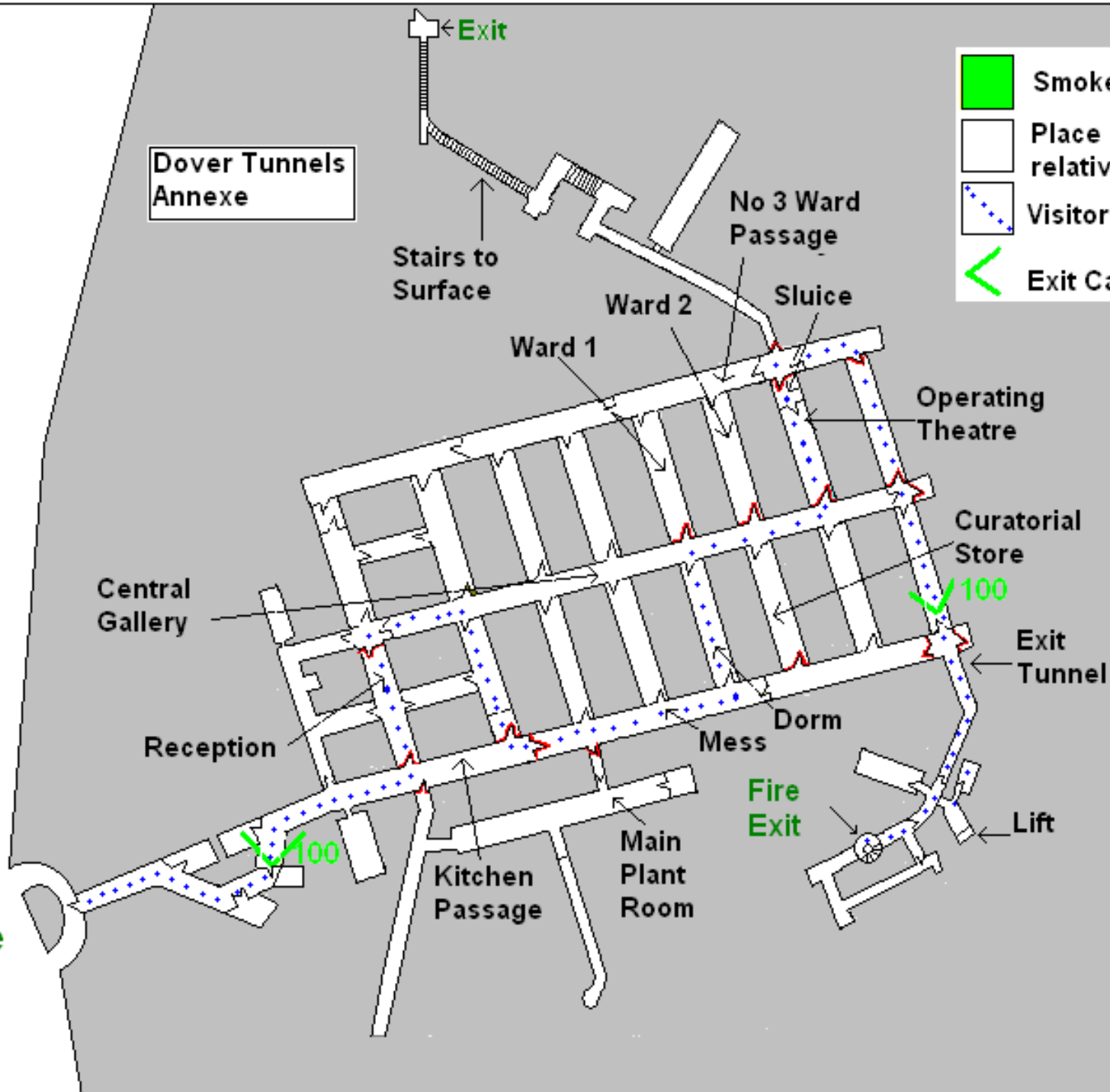
Fire Exit

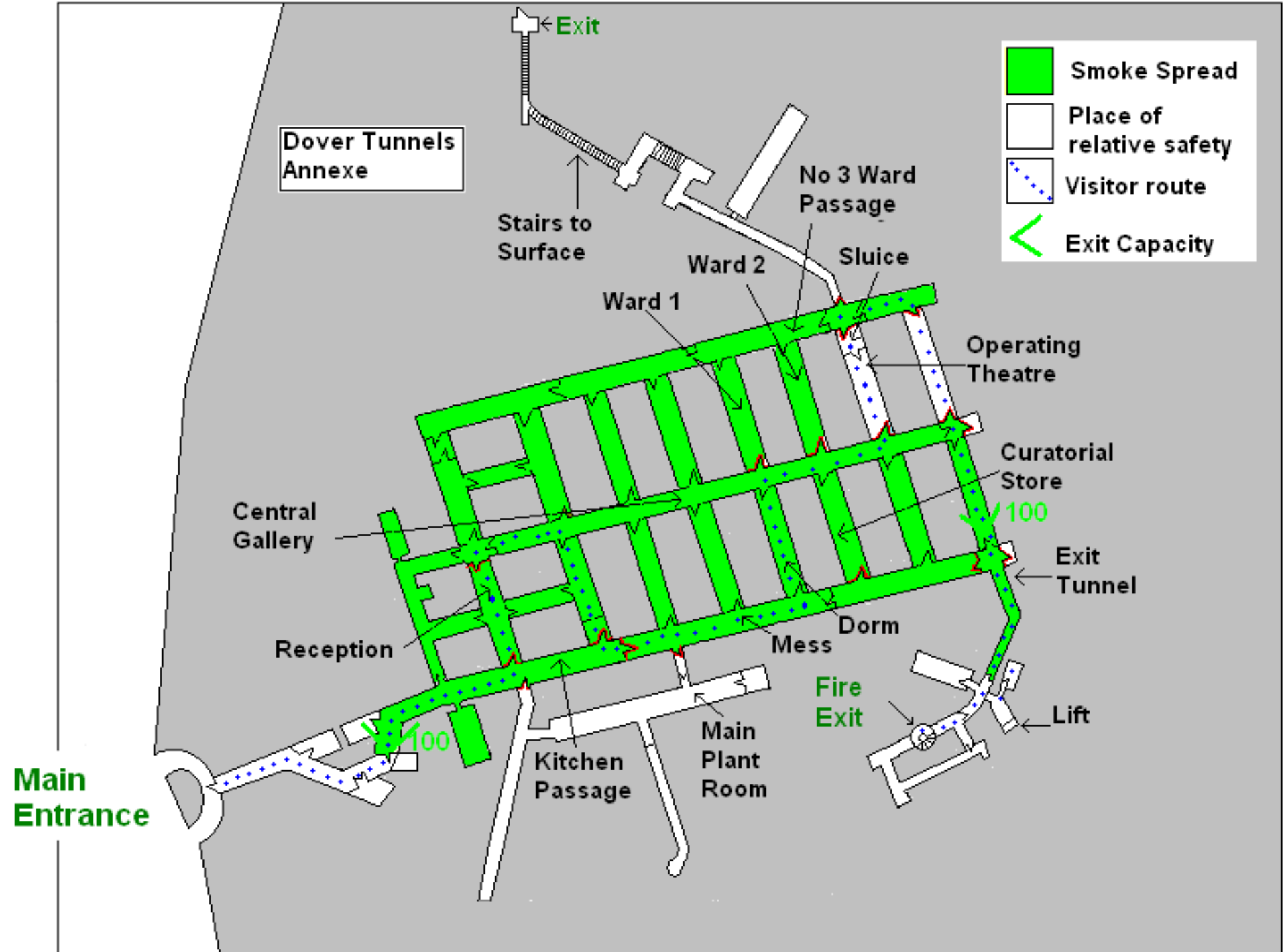
Lift

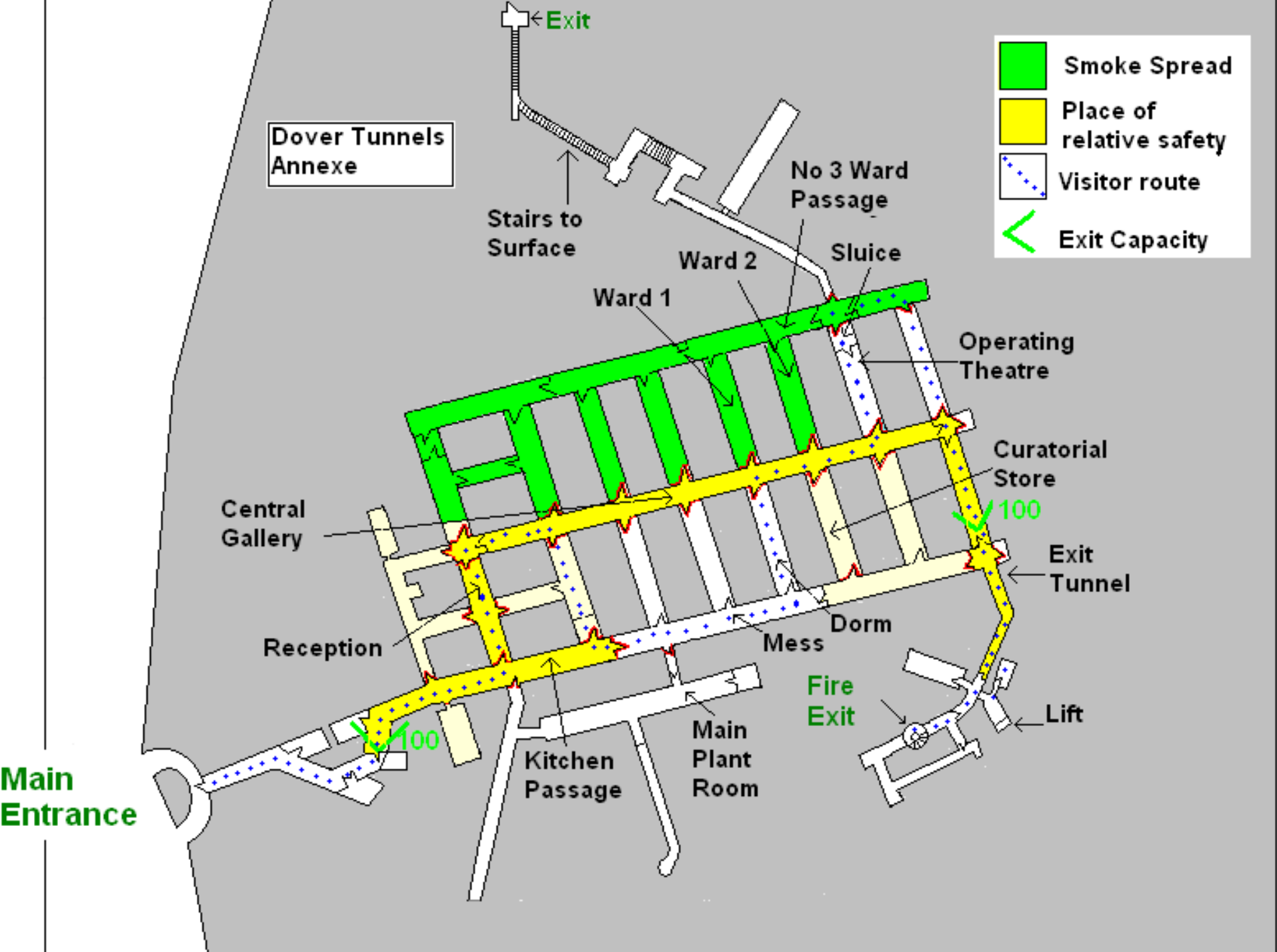
Kitchen Passage

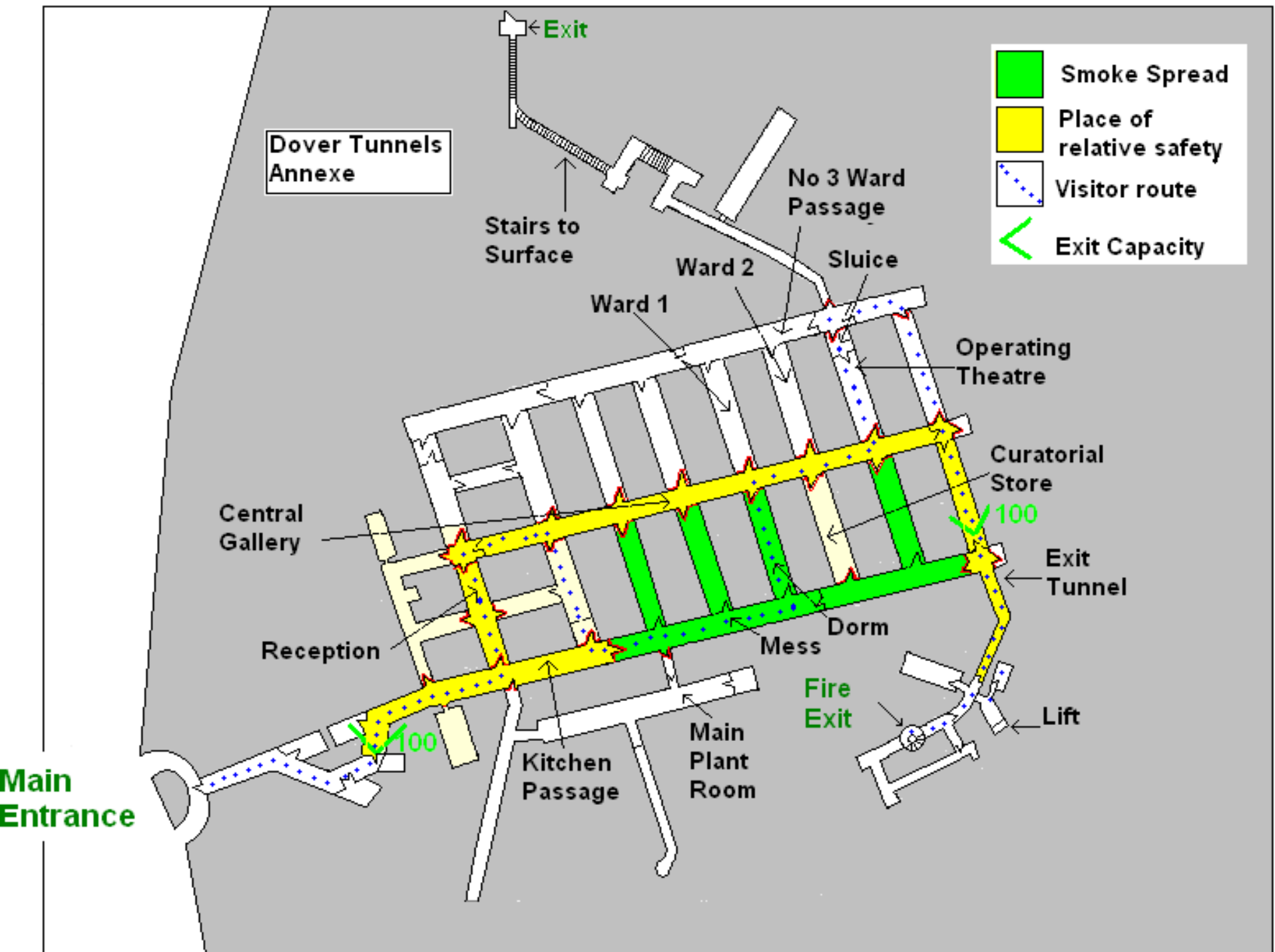
Main Plant Room

-  Smoke Spread
-  Place of relative safety
-  Visitor route
-  Exit Capacity











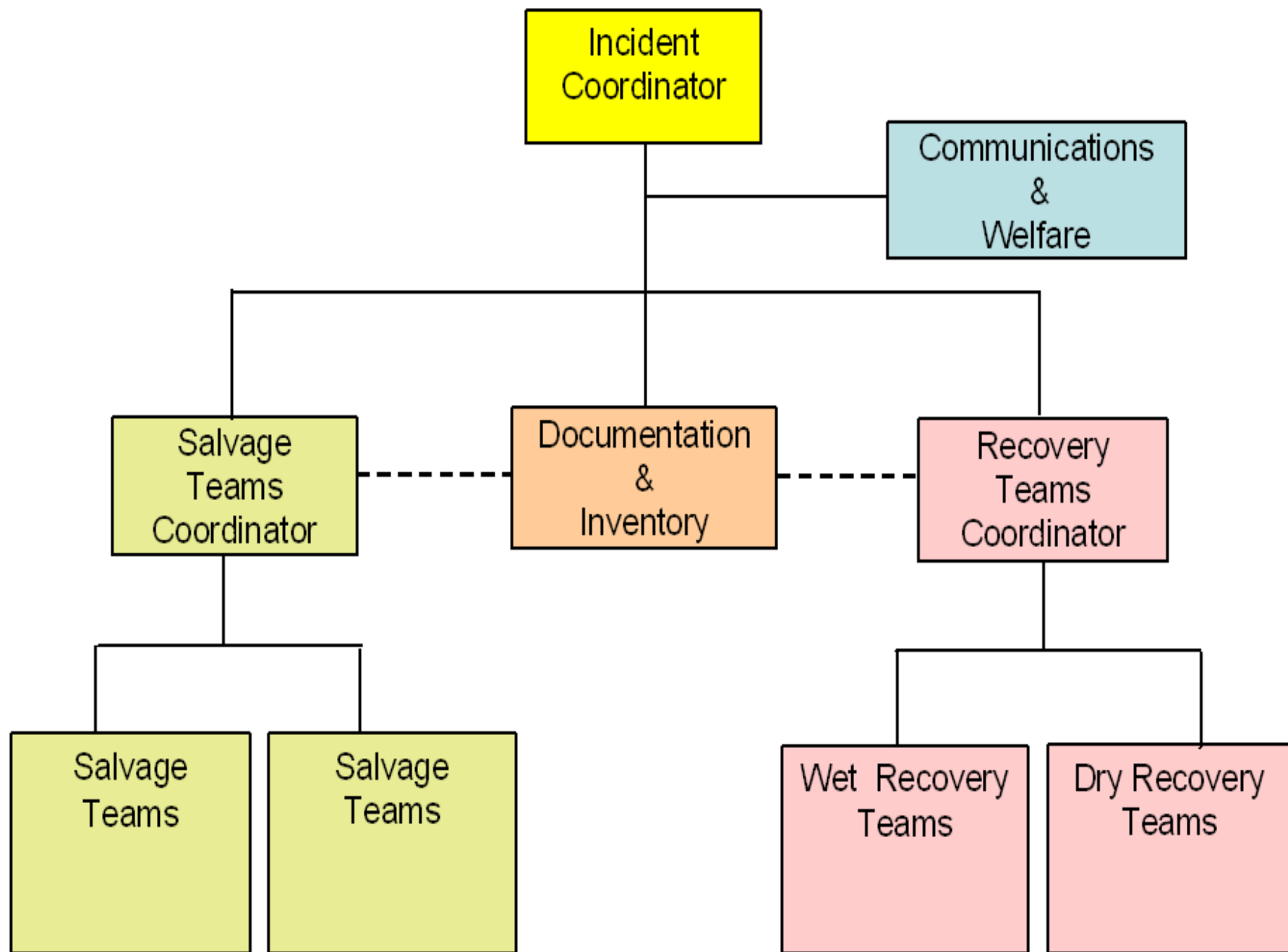


Walmer Castle and Gardens
Visitor Information
1st November 2004
to 28th February 2005.

The Castle is closed for the
winter period but the gardens
are open free of charge to
visitors from 10.00am to
3.45 pm.

A bell will be sounded at
3.30pm and all visitors are
requested to leave the gardens
before 3.45pm

English Heritage



Steve Emery

Fire Safety Adviser for English
Heritage

Steve.emery@english-heritage.org.uk

