



COMANDO PROVINCIALE VIGILI DEL FUOCO DI PALERMO

"In periculo vitam agere"

Oggetto dei Lavori

Lavori di Manutenzione Straordinaria dei Servizi
Igienici della Sede Centrale del Comando
provinciale dei Vigili del Fuoco di Palermo

CIG: 92966237FD - CUP: F72H22000370001

Sede di Servizio

SEDE CENTRALE - via Scarlatti n° 16 - PA

TAV.05

Demolizioni e Ricostruzioni

Aggiornamento

REV_00

Scala

- : -

Il RUP

I Progettisti

Il Comandante

(Ing. Davide Di Franco)

(Ing. Davide Di Franco)

(Ing. Marcello Zambito Marsala)

(Ing. Sergio Inzerillo)

Palermo - 30/06/2022



Deposito

W.C.
H=5,60

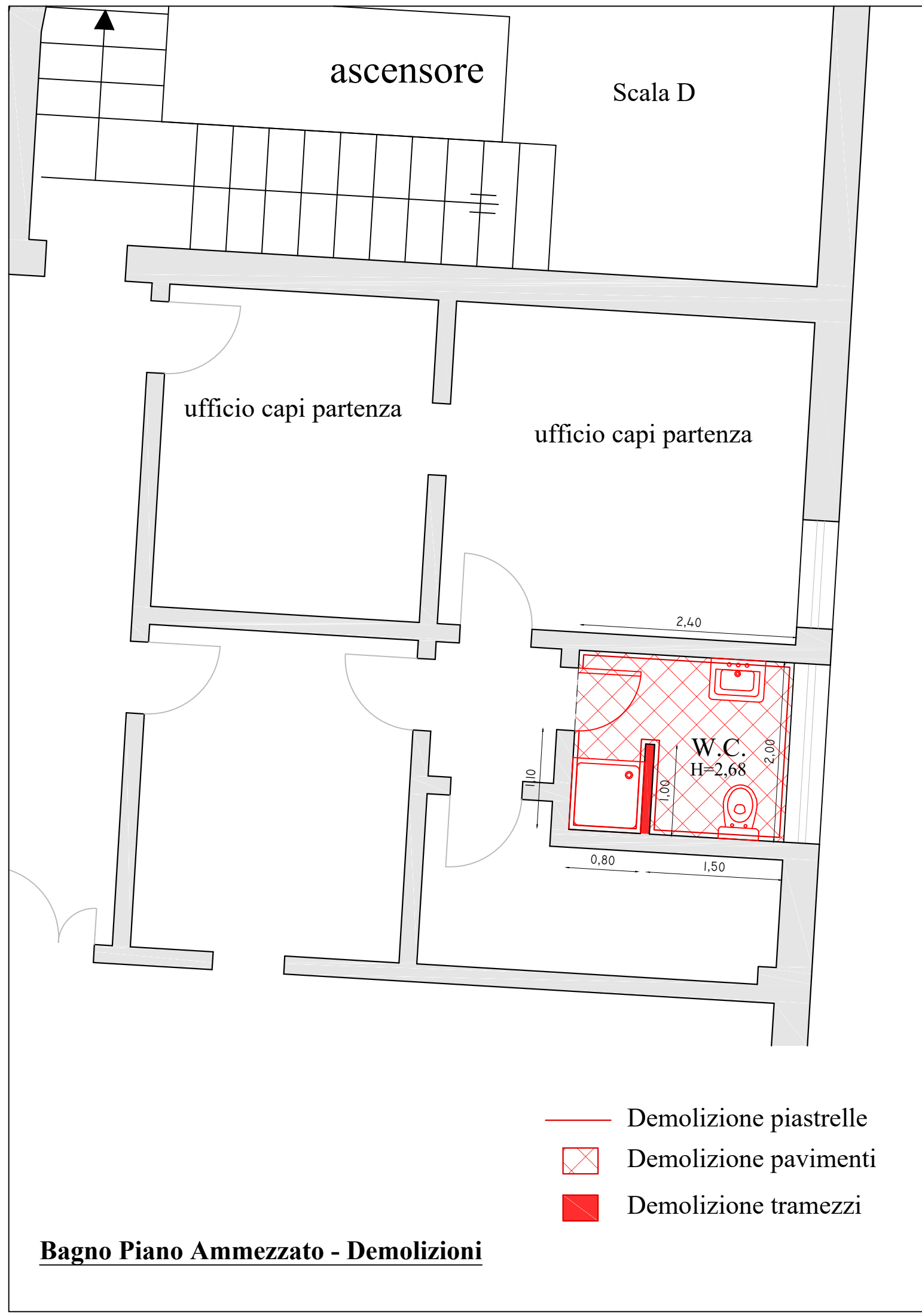
magazzinetto

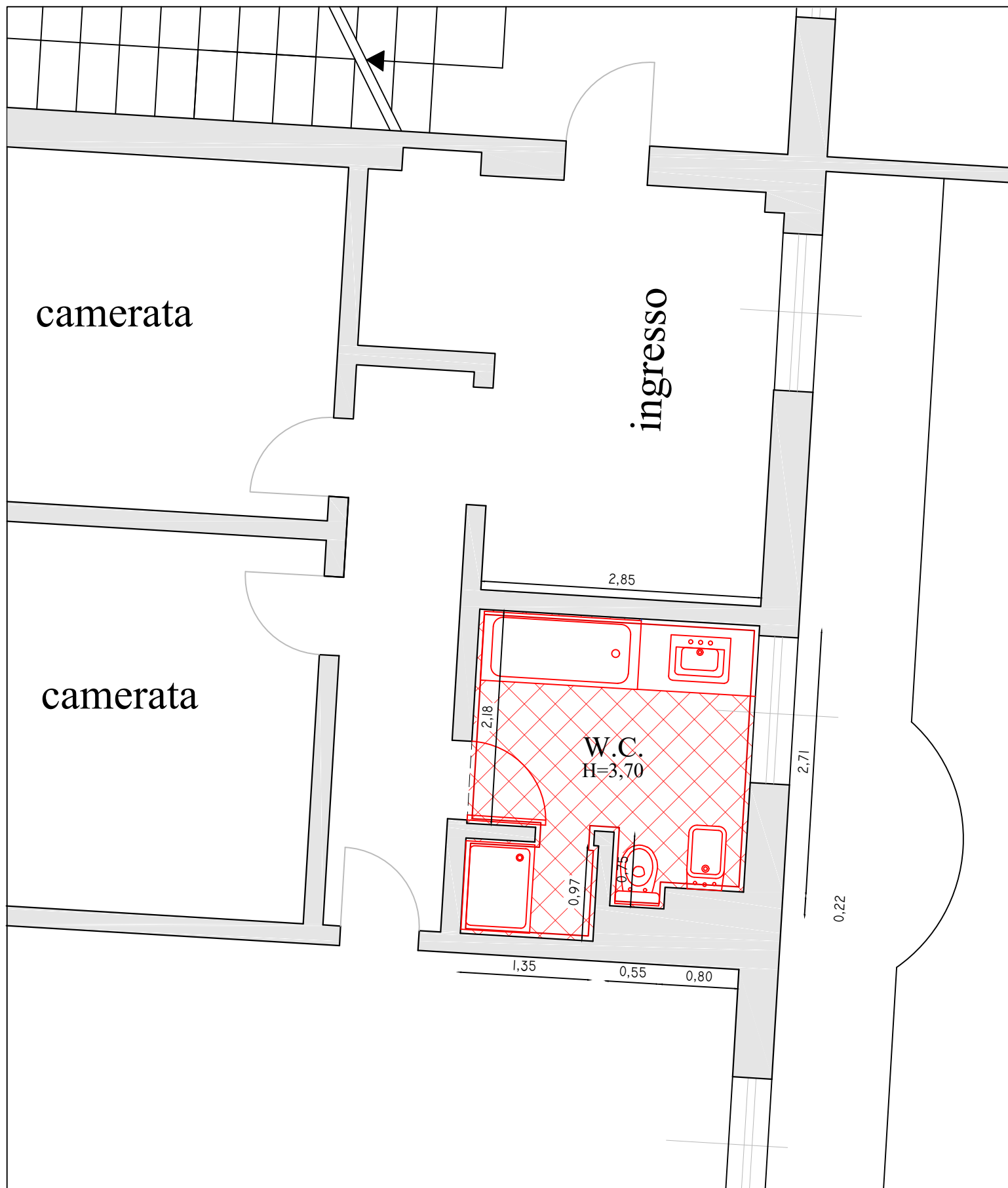
ascensore

Scala D

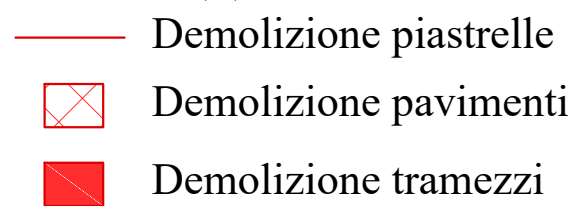
-  Demolizione piastrelle
 Demolizione pavimenti
 Demolizione tramezzi

Bagno Piano Terra - Demolizioni





Bagno Piano Primo Lato Sud - Demolizioni



The floor plan shows a building with three main rooms. The top room is labeled 'Camerata'. The middle room is labeled 'Attrezzatura Speleologica' and is highlighted with a red cross-hatch pattern. The bottom room is labeled 'Camerata' and is also highlighted with a red cross-hatch pattern. The plan includes dimensions for walls, doors, and furniture. The 'Attrezzatura Speleologica' room is labeled 'W.C. - 1' and 'H=3,30'. The 'Camerata' room is labeled 'W.C. - 2' and 'H=4,50'. The plan also shows a 'Camerata' room on the left side. The dimensions for the rooms are: 'Attrezzatura Speleologica' (2,85 x 1,90), 'Camerata' (2,80 x 0,80), and 'Camerata' (2,62 x 2,30). The plan also shows a 'Camerata' room on the left side. The dimensions for the rooms are: 'Attrezzatura Speleologica' (2,85 x 1,90), 'Camerata' (2,80 x 0,80), and 'Camerata' (2,62 x 2,30).

Architectural floor plan of a building with three rooms: "Camerata" (top), "Attrezzatura Speleologica" (middle), and "Camerata" (bottom). The plan includes dimensions for walls, doors, and furniture. The middle room is divided into two sections, "W.C. - 1" and "W.C. - 2", both marked with a red cross-hatch pattern. The plan also shows a staircase and a curved wall on the right side.

Room Details:

- Top Room (Camerata):** Dimensions: 2,85 (width), 1,90 (depth).
- Middle Room (Attrezzatura Speleologica):** Dimensions: 2,80 (width), 2,69 (depth).
- Bottom Room (Camerata):** Dimensions: 2,85 (width), 2,30 (depth).

W.C. - 1 (Top Section): Dimensions: 2,15 (width), 0,85 (depth). Features: Sink, Toilet, Shower, Mirror.

W.C. - 2 (Bottom Section): Dimensions: 1,97 (width), 0,70 (depth). Features: Sink, Toilet, Shower, Mirror.

Dimensions:

- Top Room: 2,85 (width), 1,90 (depth).
- Middle Room: 2,80 (width), 2,69 (depth).
- Bottom Room: 2,85 (width), 2,30 (depth).
- W.C. - 1: 2,15 (width), 0,85 (depth).
- W.C. - 2: 1,97 (width), 0,70 (depth).

The floor plan shows a building with three main rooms. The top room is labeled 'Camerata'. The middle room is labeled 'Attrezzatura Speleologica' and is highlighted with a red cross-hatch pattern. The bottom room is labeled 'Camerata' and is also highlighted with a red cross-hatch pattern. The plan includes dimensions for walls, doors, and furniture. The 'Attrezzatura Speleologica' room is labeled 'W.C. - 1' and 'H=3,30'. The 'Camerata' room is labeled 'W.C. - 2' and 'H=4,50'. The plan also shows a 'Camerata' room on the left side. The dimensions for the rooms are: 'Camerata' (top) 2,85 x 1,90; 'Attrezzatura Speleologica' (middle) 2,80 x 2,69; and 'Camerata' (bottom) 2,85 x 2,30. The plan also shows a 'Camerata' room on the left side with dimensions 2,80 x 2,62. The plan includes a scale bar and a north arrow.

The floor plan shows a building with three main rooms. The top room is labeled 'Camerata'. The middle room is labeled 'Attrezzatura Speleologica' and is highlighted with a red cross-hatch pattern. The bottom room is labeled 'Camerata' and is also highlighted with a red cross-hatch pattern. The plan includes dimensions for walls, doors, and furniture. The 'Attrezzatura Speleologica' room is labeled 'W.C. - 1' and 'H=3,30'. The 'Camerata' room is labeled 'W.C. - 2' and 'H=4,50'. The plan also shows a 'Camerata' room on the left side. The dimensions for the rooms are: 'Camerata' (top) 2,85 x 1,90; 'Attrezzatura Speleologica' (middle) 2,80 x 2,69; and 'Camerata' (bottom) 2,85 x 2,30. The plan also shows a 'Camerata' room on the left side with dimensions 2,80 x 2,62. The plan includes a scale bar and a north arrow.

The floor plan shows a building with three main rooms. The top room is labeled 'Camerata'. The middle room is labeled 'Attrezzatura Speleologica' and is highlighted with a red cross-hatch pattern. The bottom room is labeled 'Camerata' and contains two smaller rooms, 'W.C. - 1' and 'W.C. - 2', which are also highlighted with a red cross-hatch pattern. The plan includes various dimensions for walls, doors, and furniture. The 'Attrezzatura Speleologica' room has a width of 2.85 and a height of 1.90. The 'W.C. - 1' room has a width of 2.80 and a height of 0.80. The 'W.C. - 2' room has a width of 2.62 and a height of 0.80. The 'Camerata' rooms are labeled 'W.C. - 1' and 'W.C. - 2'.

The architectural floor plan shows a building with three main rooms. The top room is labeled 'Camerata'. The middle room is labeled 'Attrezzatura Speleologica'. The bottom room is also labeled 'Camerata'. The middle room is divided into two sections, 'W.C. - 1' and 'W.C. - 2', both marked with a red cross-hatch pattern. The plan includes dimensions for walls, doors, and furniture. The middle room is divided into two sections, 'W.C. - 1' and 'W.C. - 2', both marked with a red cross-hatch pattern. The plan also shows a staircase and a curved wall on the right side.

Room Details:

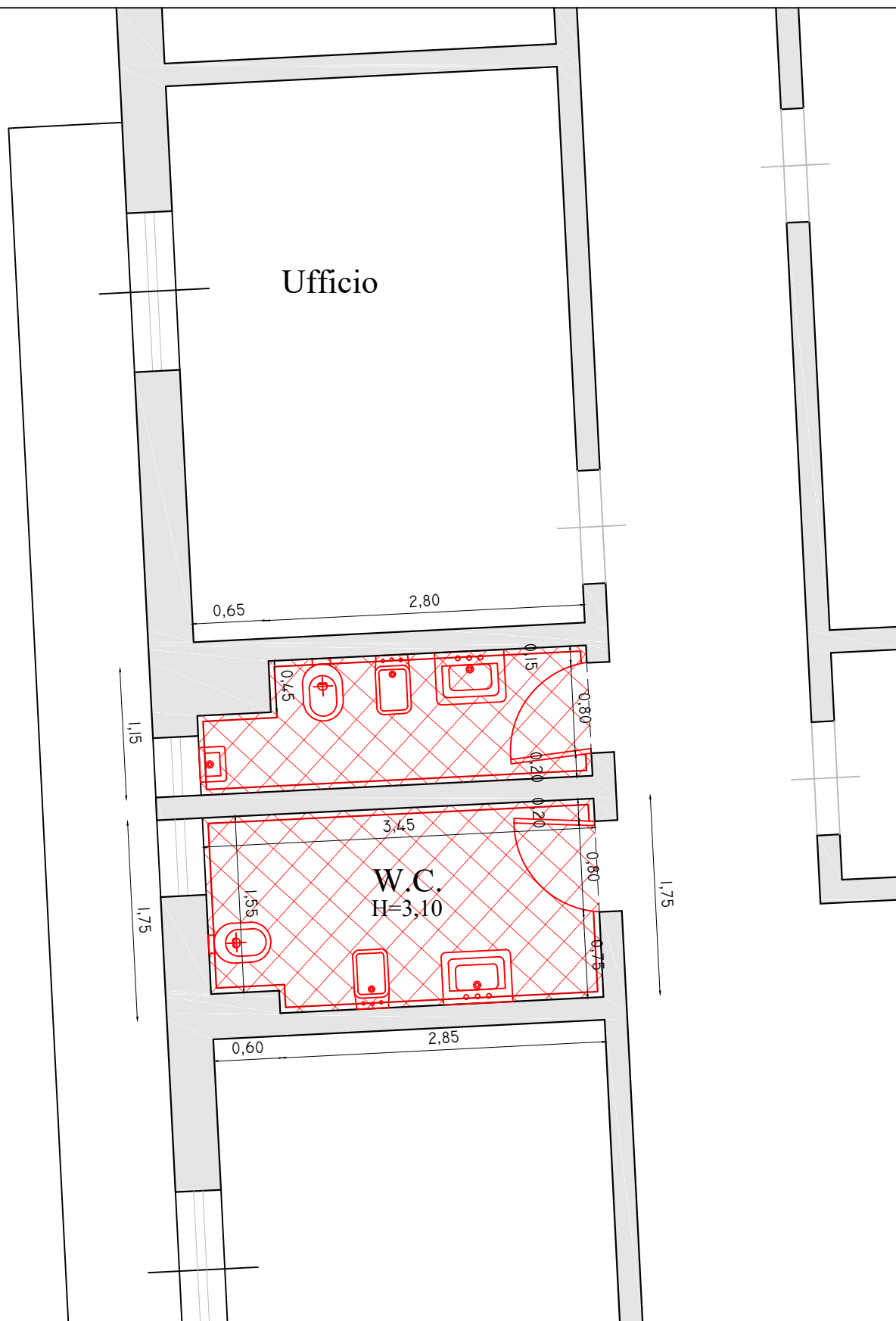
- Top Room (Camerata):** Dimensions: 2.85 (width), 1.90 (depth).
- Middle Room (W.C. - 1):** Dimensions: 2.80 (width), 0.80 (depth). Internal dimensions: 0.85 (width), 0.85 (depth). Furniture: Sink, toilet, shower, bathtub.
- Bottom Room (W.C. - 2):** Dimensions: 2.62 (width), 0.80 (depth). Internal dimensions: 1.97 (width), 0.70 (depth). Furniture: Sink, toilet, shower, bathtub.

Other Dimensions:

- Staircase: 1.40 (width), 2.69 (depth).
- Curved Wall: 2.30 (width).

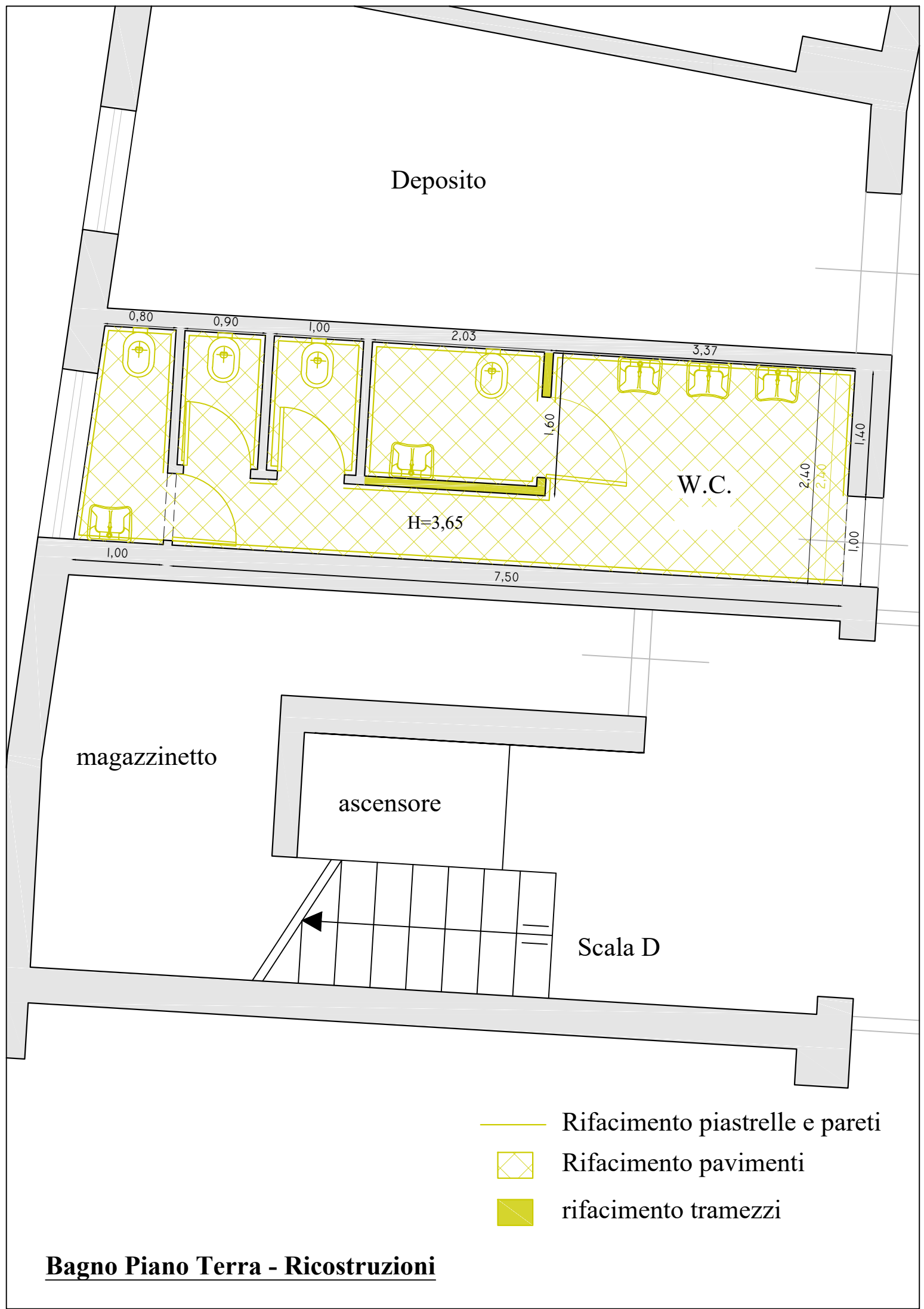
-
- The floor plan shows a building with three main rooms. The top room is labeled 'Camerata'. The middle room is labeled 'Attrezzatura Speleologica' and is highlighted with a red cross-hatch pattern. The bottom room is labeled 'Camerata' and contains two smaller rooms, 'W.C. - 1' and 'W.C. - 2', which are also highlighted with a red cross-hatch pattern. The plan includes various dimensions for walls, doors, and furniture. The 'Attrezzatura Speleologica' room has a width of 2.85 and a height of 1.90. The 'W.C. - 1' room has a width of 2.80 and a height of 0.80. The 'W.C. - 2' room has a width of 2.62 and a height of 0.80. The plan also shows a large curved area on the right side, possibly a courtyard or a large room, and a small area at the bottom right labeled '2.30'.

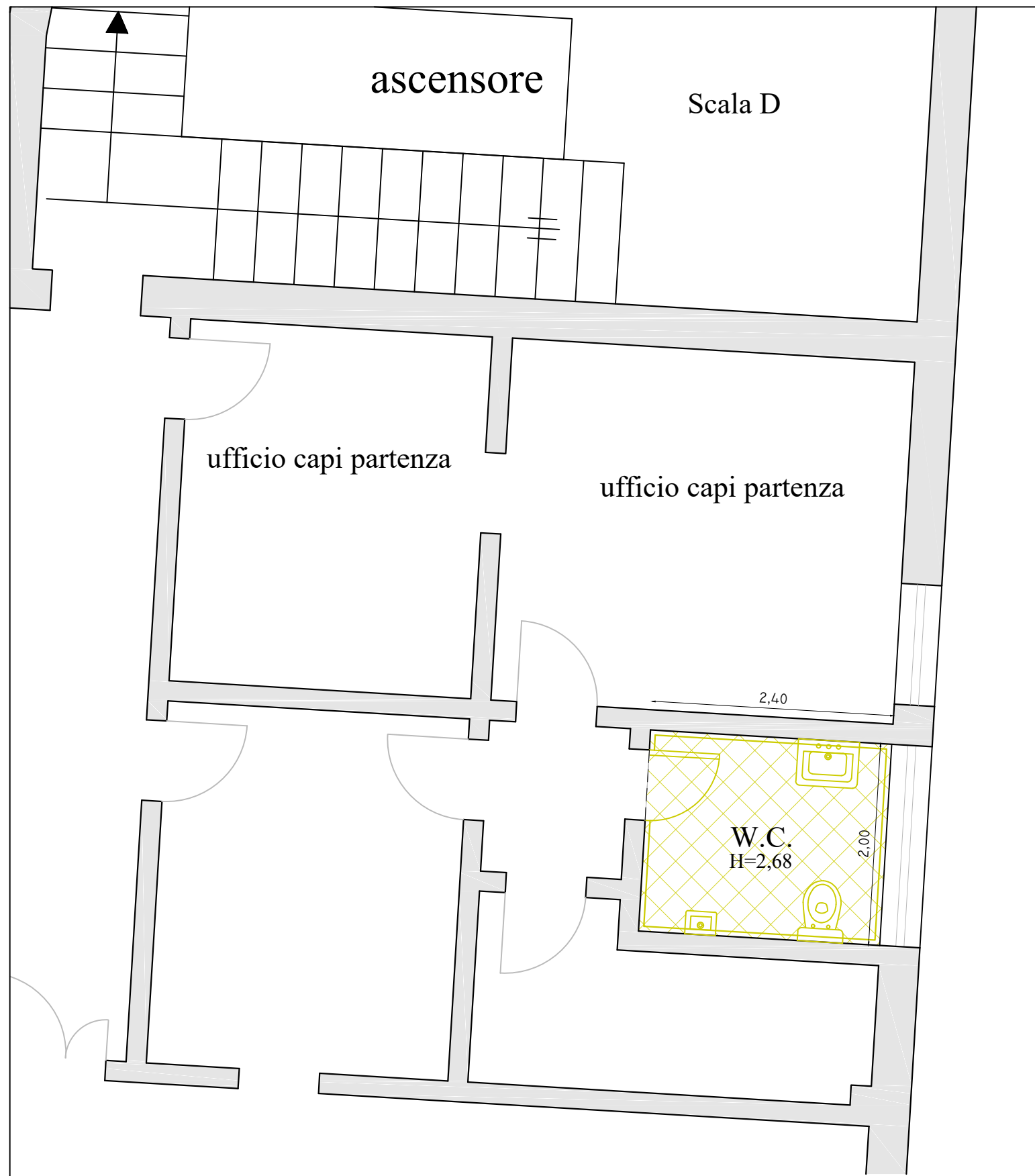
The floor plan shows a building with three main rooms. The top room is labeled 'Camerata'. The middle room is labeled 'Attrezzatura Speleologica' and is highlighted with a red cross-hatch pattern. The bottom room is labeled 'Camerata' and contains two smaller rooms, 'W.C. - 1' and 'W.C. - 2', which are also highlighted with a red cross-hatch pattern. The plan includes various dimensions for walls, doors, and furniture. The 'Attrezzatura Speleologica' room has a width of 2.85 and a height of 1.90. The 'W.C. - 1' room has a width of 2.80 and a height of 0.80. The 'W.C. - 2' room has a width of 2.62 and a height of 0.80. The 'Camerata' rooms are labeled 'W.C. - 1' and 'W.C. - 2'.



- Demolizione piastrelle
- ⊠ Demolizione pavimenti
- Demolizione tramezzi

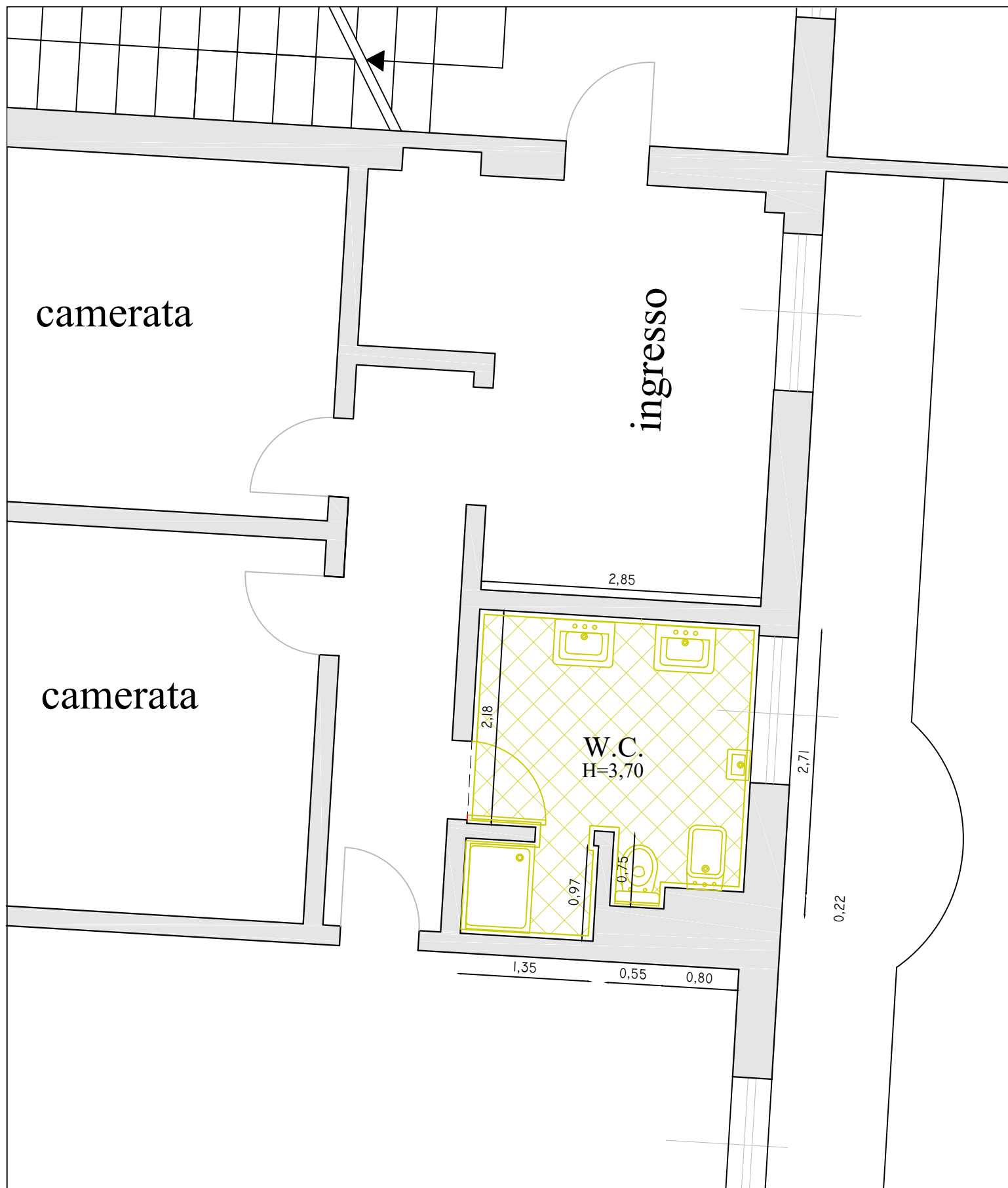
Bagno Piano Secondo lato Nord - Demolizioni

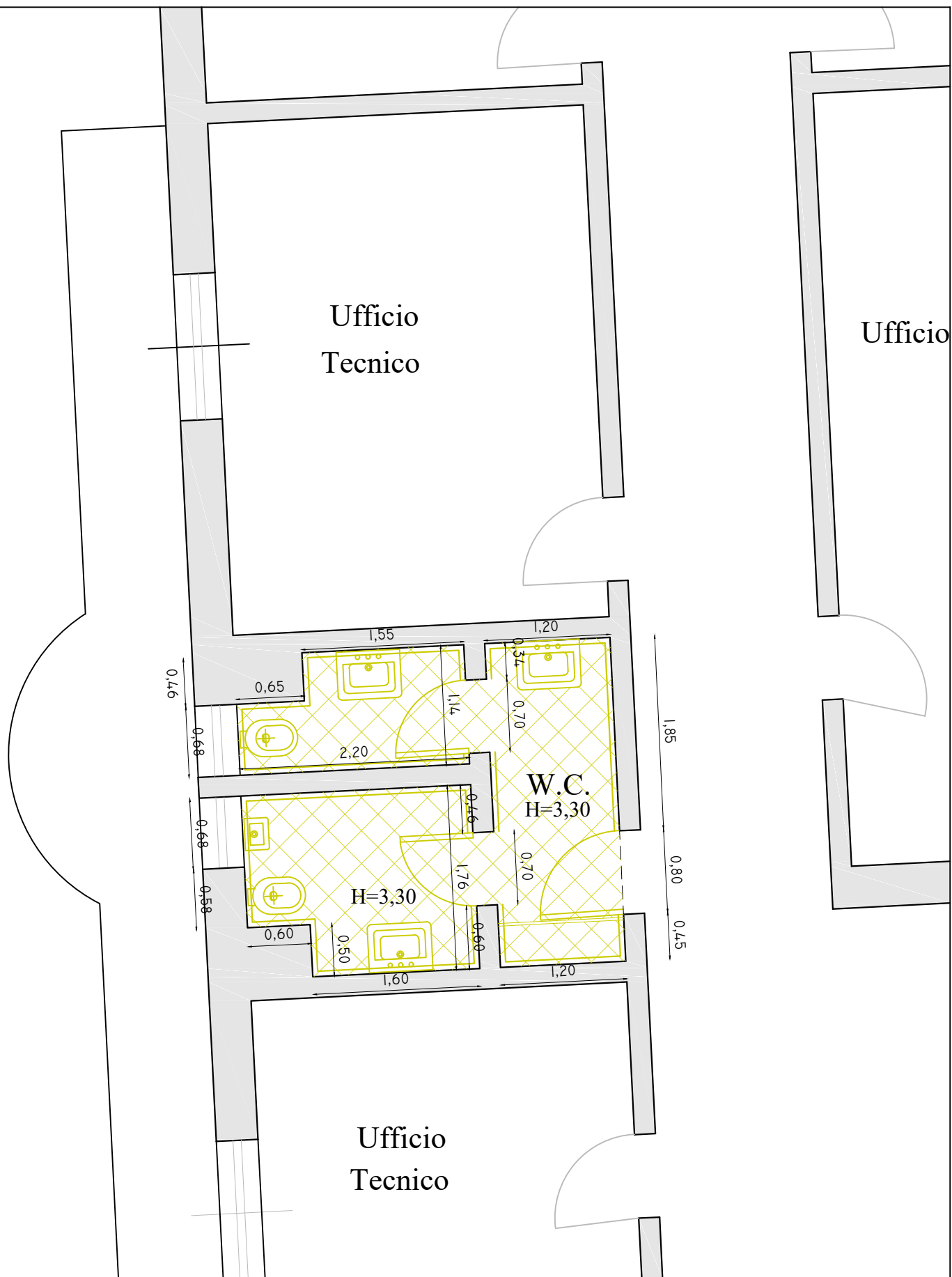




- Rifacimento piastrelle e pareti
- ▤ Rifacimento pavimenti
- rifacimento tramezzi

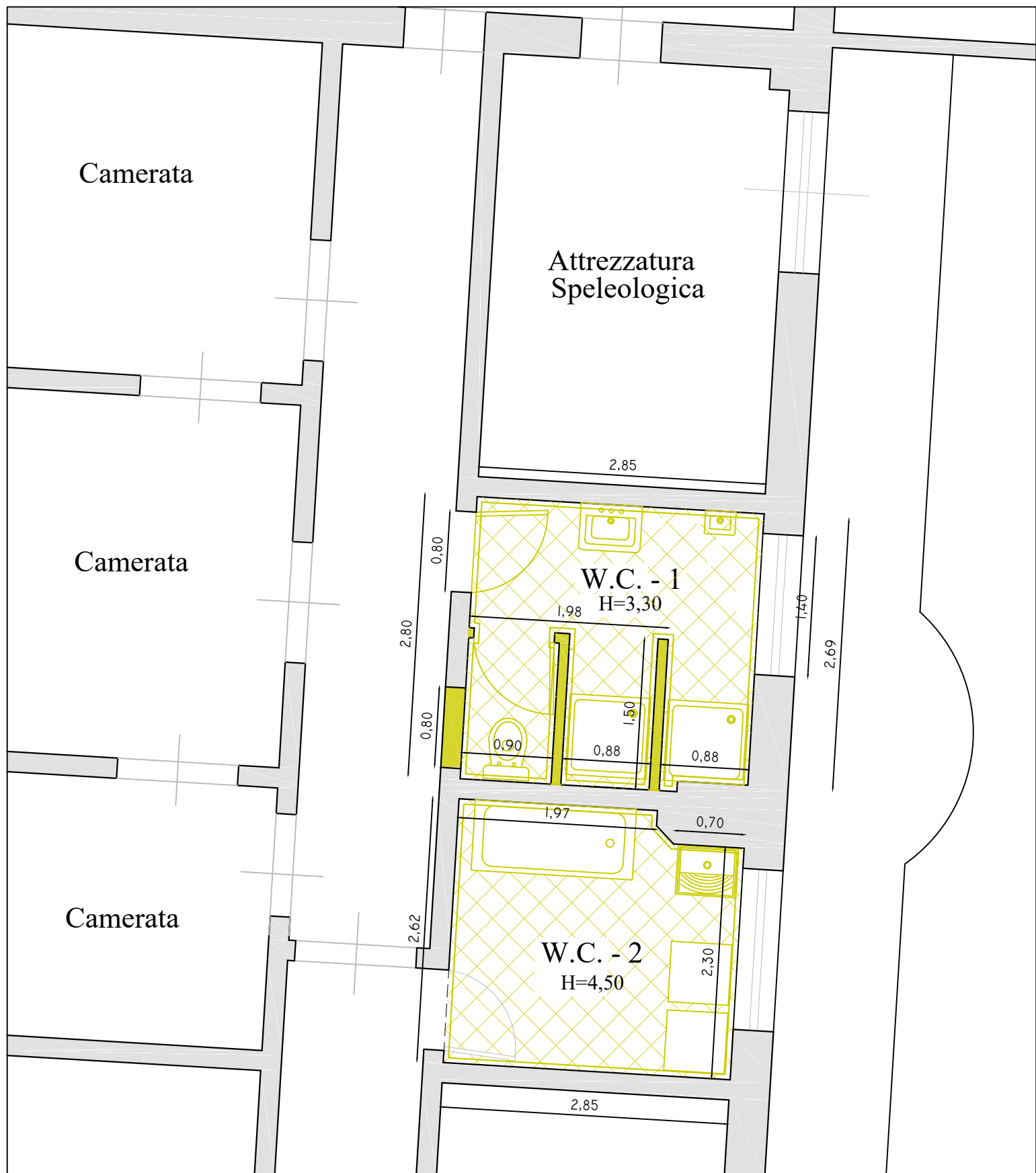
Bagno Piano Ammezzato - Ricostruzioni



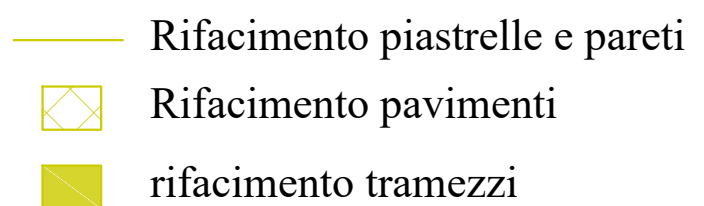


- Rifacimento piastrelle e pareti
- ▨ Rifacimento pavimenti
- ▧ rifacimento tramezzi

Bagno Piano Primo Lato Nord - Ricostruzioni



Bagno Piano Secondo lato Sud



Bagno Piano Secondo lato Nord - Ricostruzioni